



VintageDim® 2 is a dim-to-warm and variable white system that enables true dim to warm with custom curves on one 0-10V control circuit or CCT and Intensity control on two 0-10v control circuits. All modes and features can be factory programmed but can also be programmed in the field using the accompanying smartphone application. Programming is achieved via NFC wireless technology.



INPUT

Voltage	120-277 VAC
Current	0.94A @120V and 0.41A at 277V

OUTPUT

Max Current	4A max
Max Voltage	24VDC

CONTROL

Protocol	One/Two 0-10V control input(s) depending on programmed settings.
Dimming Performance	Dims below 1% on most 0-10V dimmers

**Maximum of 25 modules on one dimmer. Consult dimmer datasheet for maximum device limitation of a specific controller.*

Specify VintageDim® as an option in the part number builder of each compatible Optic Arts® luminaire. Part number below provided for reference only. Compatible products listed on next page.

PART NUMBER BUILDER

<p style="text-align: center; margin: 0;">SERIES</p> <p style="text-align: center; margin: 5px 0;">+-----+</p> <p style="text-align: center; margin: 0;">DIM.010V = 0-10V Module</p>	<p style="text-align: center; margin: 0;">CONTROL</p> <p style="text-align: center; margin: 5px 0;">+-----+</p> <p>WW = Standard One Channel - Dim To Warm Curve W2C = Standard Two Channel - Dim 1: Intensity; Dim 2: CCT W2I = Standard Two Channel - Dim 1: Warm Channel Intensity; Dim 2: Cool Channel Intensity W1X = Custom One Channel - Dim To Warm Curve W2X = Custom Two Channel - Dim 1: Intensity; Dim 2: CCT</p>
--	---

OTHER

Length (L)	11.46 in
Width (W)	3.00 in
Height (H)	1.30 in
Weight	2.86 lbs
Working Temp. Range	-20 to 50°C
Warranty	5 years

WIRE COLOR CODING

AC Driver Input	12", UL #18AWG (White, Black, Green)
DC Driver Output	12", UL #18AWG (Red and Blue)
DC Module Input	6.5", UL #18AWG (Red, Blue)
DC Module Output	6.5", UL #18AWG (Black, Yellow, White)
Control Input	#1 6.5", UL #24AWG (Gray, Purple) #2 6.5", UL #24AWG (Gray, Orange)

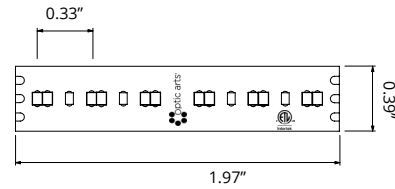
COMPATIBLE STRIP PRODUCTS

FLEX STP VARIABLE WHITE

STP Variable White Cut Sheet

IP Rating: 20
 Voltage: 24
 Watts/Ft: 5.8
 Max Run: 16.00'
 Cuttable Increment: Every 1.97"

	COLOR	LUMENS/FT
18+35	Both colors at 100% (2829K)	355.00
	1800K only	142.00
	3550K only	219.00
18+65	Both colors at 100% (3561K)	349.00
	1800K only	142.00
	6500K only	211.00



Notes:

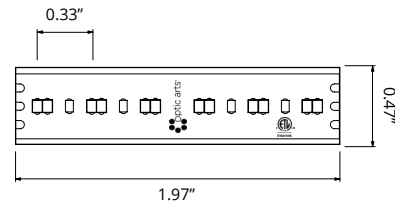
- Full CCT range can be utilized via custom programming.
- Stated lumen values have a tolerance of +/- 10%.

FLEX STP VARIABLE WHITE IP67

STP Variable White IP67 Cut Sheet

IP Rating: 67
 Voltage: 24
 Watts/Ft: 5.8
 Max Run: 16.00'
 Cuttable Increment: Every 1.97"

	COLOR	LUMENS/FT
18+35	Both colors at 100% (2829K)	312.00
	1800K only	124.00
	3550K only	193.00



Notes:

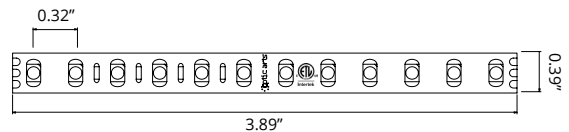
- Full CCT range can be utilized via custom programming.
- Stated lumen values have a tolerance of +/- 10%.

FLEX DC® VARIABLE WHITE (3.0)

FLEX DC® Variable White Cutsheet

IP Rating: 40 or 68
 Voltage: 24
 Watts/Ft: 3.0
 Max Run: IP40: 32', IP68: 20'
 Cuttable Increment: Every 3.89"

	COLOR	LUMENS/FT
20+35	Both colors at 100% (2829K)	214.00
	2000K only	92.65
	3500K only	141.31
24+60	Both colors at 100% (4518K)	230.00
	2400K only	113.67
	6000K only	140.01



Notes:

- Full CCT range can be utilized via custom programming.
- Stated lumen values have a tolerance of +/- 10%.

DIMMING CURVES

• Standard

Modules ship standard with an 1800K-2700K curve when used with FLEX STP Variable White 1835. Warm and cool LEDs are mixed to create a high CRI 2700K white and maximize light output. As the fixture is dimmed, the cool LEDs slowly fade out, leaving a warm 1800K glow at the bottom of the dimming range.

• Two Channel Control Mode 1:

Dim 1: Overall Intensity; Dim 2: CCT Control

• Two Channel Control Mode 2:

Dim 1: Warm Strip Intensity; Dim 2: Cool Strip Intensity

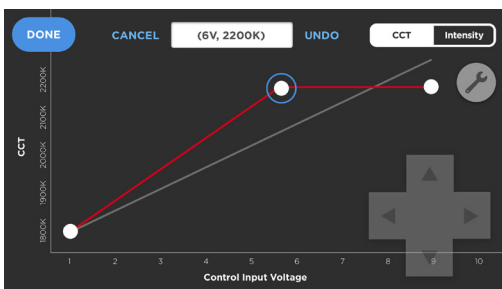
• Color Tolerance

Color tolerance of the stated dimming curves is based on the specific LED strip used. Consult strip cutsheet for more information.

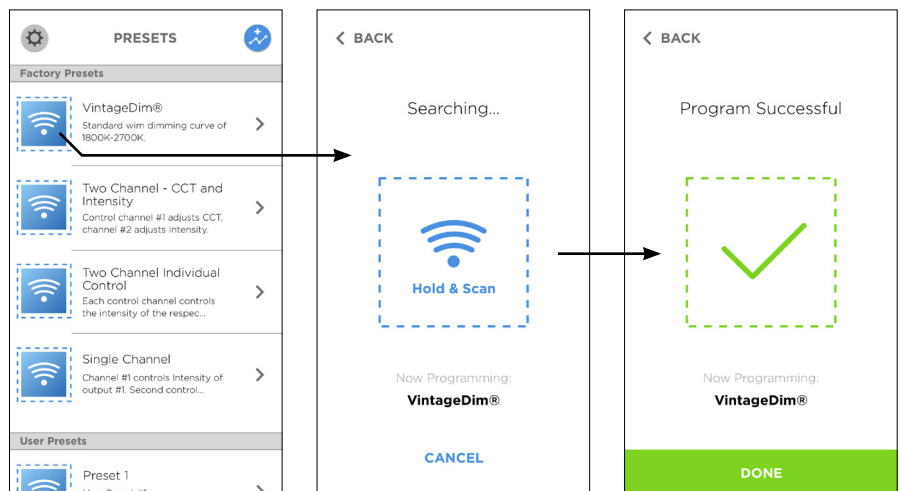
• Custom

Custom dimming curves are user programmed in conjunction with Android app with NFC chip. For factory programmed custom dimming curves, please refer to Product Number Bulider (*page.1*):

1. DIM.010V.W1X = Custom One Channel - Dim To Warm Curve
2. DIM.010V.W2X = Custom Two Channel - Dim 1: Intensity; Dim 2: CCT



Use app to create custom curve.



Select from presets list to program custom curve.

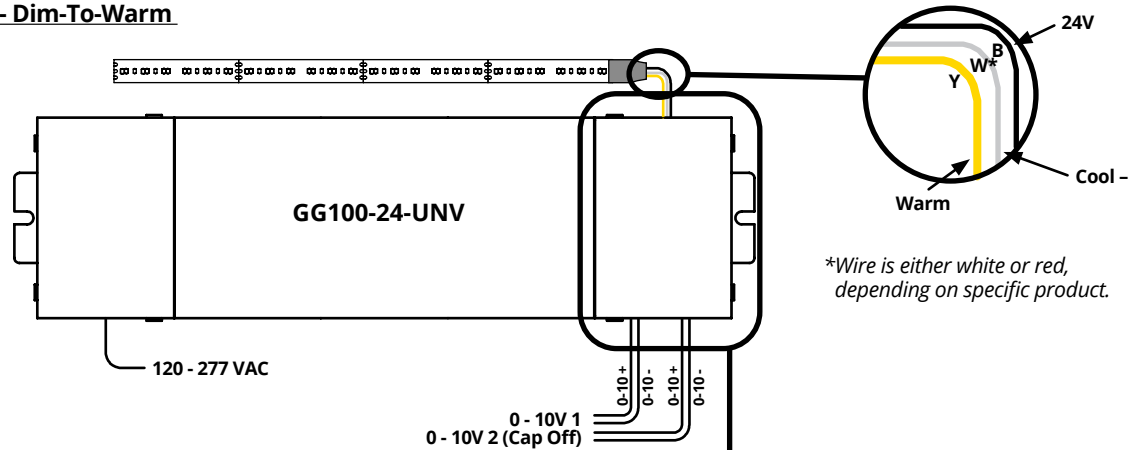
Hold phone over module to program via NFC chip.

Program custom curve.

Optic Arts® retains all intellectual property rights to custom dimming curves made on our platform.

WIRING DIAGRAM

Single Control Channel - Dim-To-Warm

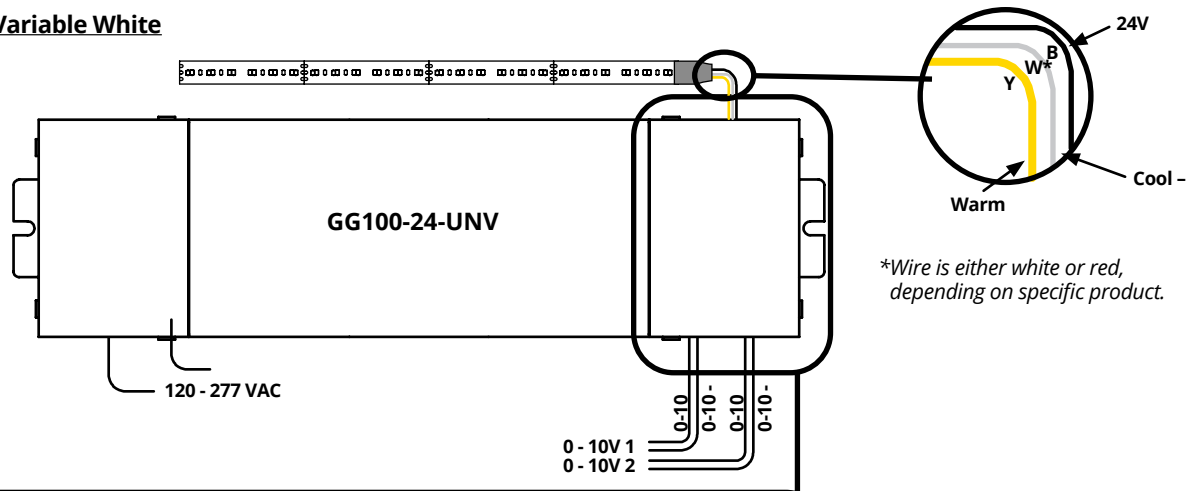


FIELD INSTALLED IN LOW VOLTAGE WIRING COMPARTMENT

- Install VintageDim® Module in low voltage wiring compartment.
- Maximum of 25 modules on one dimmer. Consult dimmer datasheet for maximum device limitation of a specific controller.

GRAY WIRE TO 0-10V CONTROLLER - CHANNEL 1		YELLOW WIRE TO LED (WARM) -
VIOLET WIRE TO 0-10V CONTROLLER + CHANNEL 1		WHITE WIRE TO LED (COOL) -
GRAY WIRE TO 0-10V CONTROLLER - CHANNEL 2 (CAP OFF)		BLACK WIRE TO LED +
ORANGE WIRE TO 0-10V CONTROLLER + CHANNEL 2 (CAP OFF)		CAP OFF
BLUE WIRE TO DC - OUTPUT OF DRIVER		
RED WIRE TO DC + OUTPUT OF DRIVER		

Two Channel Control - Variable White



FIELD INSTALLED IN LOW VOLTAGE WIRING COMPARTMENT

- Install VintageDim® Module in low voltage wiring compartment.
- Maximum of 25 modules on one dimmer. Consult dimmer datasheet for maximum device limitation of a specific controller.

GRAY WIRE TO 0-10V CONTROLLER - CHANNEL 1		YELLOW WIRE TO LED (WARM) -
VIOLET WIRE TO 0-10V CONTROLLER + CHANNEL 1		WHITE WIRE TO LED (COOL) -
GRAY WIRE TO 0-10V CONTROLLER - CHANNEL 2		BLACK WIRE TO LED +
ORANGE WIRE TO 0-10V CONTROLLER + CHANNEL 2		CAP OFF
BLUE WIRE TO DC - OUTPUT OF DRIVER		
RED WIRE TO DC + OUTPUT OF DRIVER		