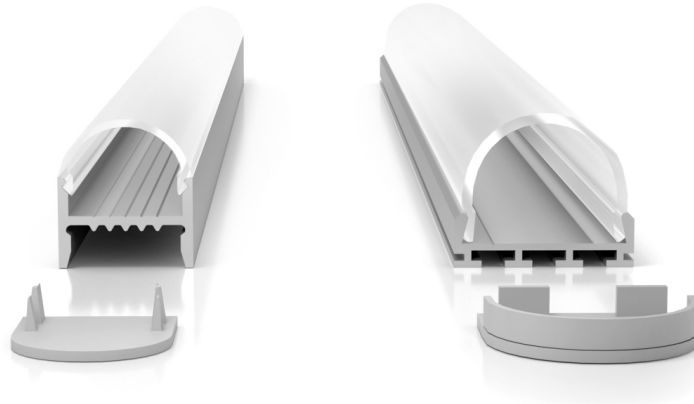


SPECIALTY CHANNEL Round Lens



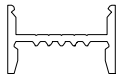
Specialty anodized extrusions with rounded wrap around lenses compatible with most **FLEX** light

CHANNEL OPTIONS

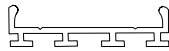
MATERIAL	FINISHES	
Anodized aluminum	<ul style="list-style-type: none"> Satin Silver Deep Bronze Anodized¹ Matte Black Anodized¹ White Powder Coat Blue Powder Coat¹ 	<ul style="list-style-type: none"> Red Powder Coat¹ Gray Powder Coat¹ Chrome¹ Custom RAL Powder Coat¹

¹: Special order finishes may increase order lead time and incur an added cost.

CHANNEL TYPE




1922



2623

LENS OPTIONS

MATERIAL	DIFFUSION
Polycarbonate	 <p>Milky</p>

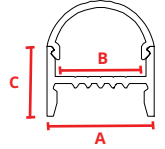
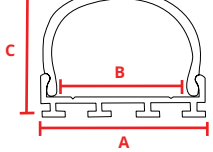
LENS TYPE



ROUND

COMBINATIONS

Note: All combinations come with fitted endcap for each end.

	 <p>CHS-S-1922R</p> <p>A: 0.77" (19.50mm) B: 0.65" (16.50mm) C: 0.86" (21.80mm)</p>	 <p>CHW-S-2623</p> <p>A: 1.03" (26.20mm) B: 0.80" (20.35mm) C: 0.89" (22.76mm)</p>
DIMENSIONS		
BLENDED FLEX W/MILKY LENS	<ul style="list-style-type: none"> FLEX DC[®] 30 FLEX STP 20² FLEX STP 40² 	<ul style="list-style-type: none"> FLEX STP 70² FLEX STP VW² FLEX STP RGBW²
CENTER BLENDED FLEX W/MILKY LENS	—	—
NOT BLENDED	<ul style="list-style-type: none"> FLEX DC[®] 15 FLEX DC[®] 22 FLEX DC[®] 44 FLEX DC[®] 88² FLEX DC[®] 44 RGBW 	<ul style="list-style-type: none"> FLEX DC[®] QUAD FLEX DC[®] VW FLEX DC[®] 15 FLEX DC[®] 22 FLEX DC[®] 44 FLEX DC[®] 88 FLEX DC[®] 44 RGBW FLEX DC[®] QUAD FLEX DC[®] WW

²: IP20 (FLEX STP) or IP40 (FLEX DC) Only

PART NUMBER BUILDER

CHANNEL	CHANNEL TYPE	CHANNEL SIZE	LENS DIFFUSION	FINISH	MOUNTING	
CHS = Channel Small ¹ CHW = Channel Wide ²	S = Corner	1922 = W 19.50mm H 21.80mm 2623 = W 26.20mm H 22.76mm	CM = Milky	SS = Satin Silver MB = Matte Black Anodized ³ BZ = Deep Bronze Anodized ³ WH = White Powder Coat ³ GY = Gray Powder Coat ³	BL = Blue Powder Coat ³ RD = Red Powder Coat ³ CH = Chrome ³ CR = Custom RAL Powder Coat ³	NA = Direct Surface MC = Mounting Clip ¹

¹: Only available with 1922 Channel Size.
²: Only available with 2623 Channel Size.

³: Special order finishes may increase order lead time and incur an added cost.

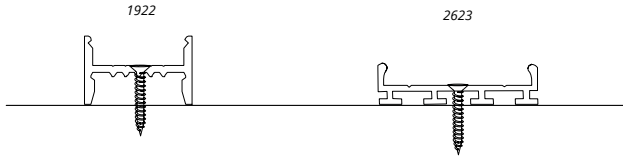
716 Monterey Pass Rd, Monterey Park, CA 91754

213.250.6069 | info@opticsarts.com | www.opticsarts.com

SPECIALTY CHANNEL Round Lens

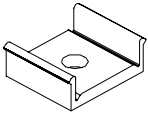
MOUNTING OPTIONS

DIRECT SURFACE



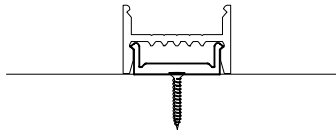
MOUNTING CLIP

CHS-S-1922R-MC

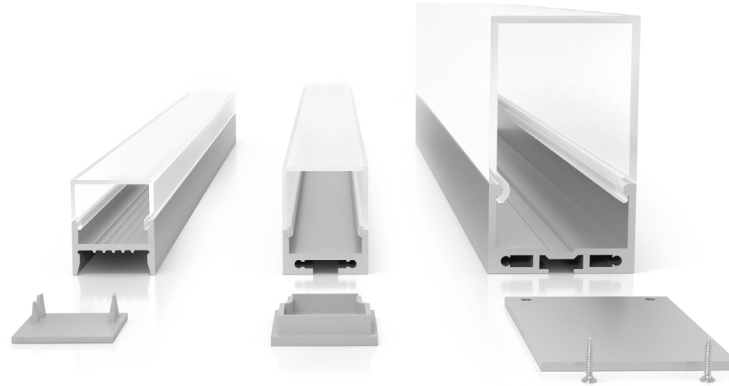


Compatible Channel: CHS-S-1922R

1922



SPECIALTY CHANNEL Square Lens



Specialty anodized extrusions with square wrap around lenses compatible with most **FLEX** light engines.

CHANNEL OPTIONS

MATERIAL	FINISHES	
Anodized aluminum	<ul style="list-style-type: none"> Satin Silver Deep Bronze Anodized¹ Matte Black Anodized¹ White Powder Coat Blue Powder Coat¹ 	<ul style="list-style-type: none"> Red Powder Coat¹ Gray Powder Coat¹ Chrome¹ Custom RAL Powder Coat¹

¹: Special order finishes may increase order lead time and incur an added cost.

CHANNEL TYPE



1922



2027



3561

LENS OPTIONS

MATERIAL	DIFFUSION
Polycarbonate	 <p>Milky</p>

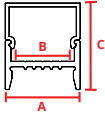
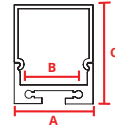
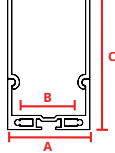



LENS TYPE



SQUARE

COMBINATIONS

Note: All combinations come with fitted endcap for each end.

		 <p>CHS-S-1922S</p> <p>A: 0.77" (19.50mm) B: 0.65" (16.50mm) C: 0.86" (21.80mm)</p>	 <p>CHW-SH-2027</p> <p>A: 0.79" (20.30mm) B: 0.66" (16.70mm) C: 1.06" (27.00mm)</p>	 <p>CHW-SH-3561</p> <p>A: 1.38" (35.00mm) B: 1.24" (31.40mm) C: 2.43" (61.70mm)</p>					
DIMENSIONS									
BLENDED FLEX W/MILKY LENS		<ul style="list-style-type: none"> FLEX DC[®] 30 FLEX STP 20² FLEX STP 40² 	<ul style="list-style-type: none"> FLEX STP 70² FLEX STP VW² FLEX STP RGBW² 	<ul style="list-style-type: none"> FLEX DC[®] 30 FLEX STP 20² FLEX STP 40² 	<ul style="list-style-type: none"> FLEX STP 70² FLEX STP VW² FLEX STP RGBW² 	<ul style="list-style-type: none"> FLEX DC[®] 15 FLEX DC[®] 30 	<ul style="list-style-type: none"> FLEX DC[®] 44 FLEX DC[®] 88 		
CENTER BLENDED FLEX W/MILKY LENS		—	—	<ul style="list-style-type: none"> FLEX STP 20 FLEX STP 40 FLEX STP 70 	<ul style="list-style-type: none"> FLEX STP VW FLEX STP RGBW 				
NOT BLENDED		<ul style="list-style-type: none"> FLEX DC[®] 15 FLEX DC[®] 22 	<ul style="list-style-type: none"> FLEX DC[®] 44 FLEX DC[®] 88² FLEX DC[®] 44 RGBW² 	<ul style="list-style-type: none"> FLEX DC[®] QUAD FLEX DC[®] VW 	<ul style="list-style-type: none"> FLEX DC[®] 15 FLEX DC[®] 22 	<ul style="list-style-type: none"> FLEX DC[®] 44 FLEX DC[®] 88² FLEX DC[®] 44 RGBW² 	<ul style="list-style-type: none"> FLEX DC[®] QUAD FLEX DC[®] VW 	<ul style="list-style-type: none"> FLEX DC[®] 22 FLEX DC[®] 44 RGBW 	<ul style="list-style-type: none"> FLEX DC[®] QUAD FLEX DC[®] VW

²: IP20 (FLEX STP) or IP40 (FLEX DC) Only

PART NUMBER BUILDER

CHANNEL	CHANNEL TYPE	CHANNEL SIZE	LENS DIFFUSION	FINISH	MOUNTING	
CHS = Channel Small ¹ CHW = Channel Wide ²	S = Surface Mounted H = Hanging Channel	1922 = W 19.50mm H 21.80mm 2027 = W 20.30mm H 19.50mm 3561 = W 35.00mm H 61.70mm	CC = Clear ⁴ CF = Frosted ⁴ CM = Milky	SS = Satin Silver MB = Matte Black Anodized ³ BZ = Deep Bronze Anodized ³ WH = White Powder Coat ³ GY = Gray Powder Coat ³	BL = Blue Powder Coat ³ RD = Red Powder Coat ³ CH = Chrome ³ CR = Custom RAL Powder Coat ³	NA = Direct Surface MC = Mounting Clip ¹ PD = Pendant ²

¹: Only available with 1922 Channel Size.

²: Only available with 2027 and 3561 Channel Size.

³: Special order finishes may increase order lead time and incur an added cost.

⁴: Only available with 2027 Channel Size.

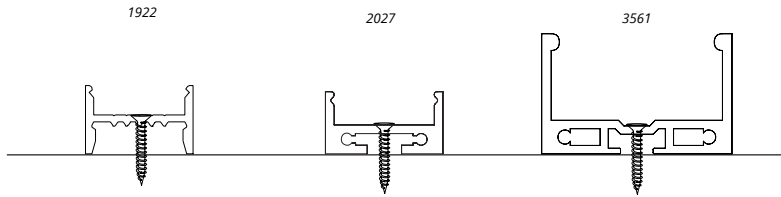
716 Monterey Pass Rd, Monterey Park, CA 91754

213.250.6069 | info@opticsarts.com | www.opticsarts.com

SPECIALTY CHANNEL Square Lens

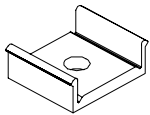
MOUNTING OPTIONS

DIRECT SURFACE



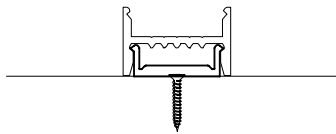
MOUNTING CLIP

CHS-S-1922R-MC



Compatible Channel: CHS-S-1922R

1922

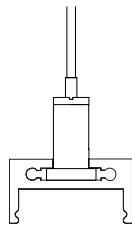


PENDANT

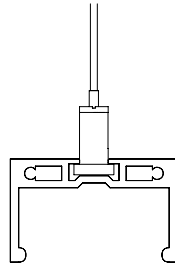
CHW-SH-2027-HHK,
CHW-SH-3561-HHK



Compatible Channel: CHW-SH-2027, CHW-SH-3561



2027

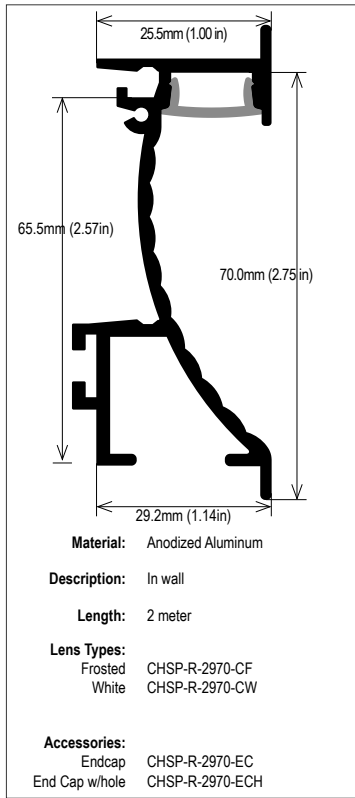


3561

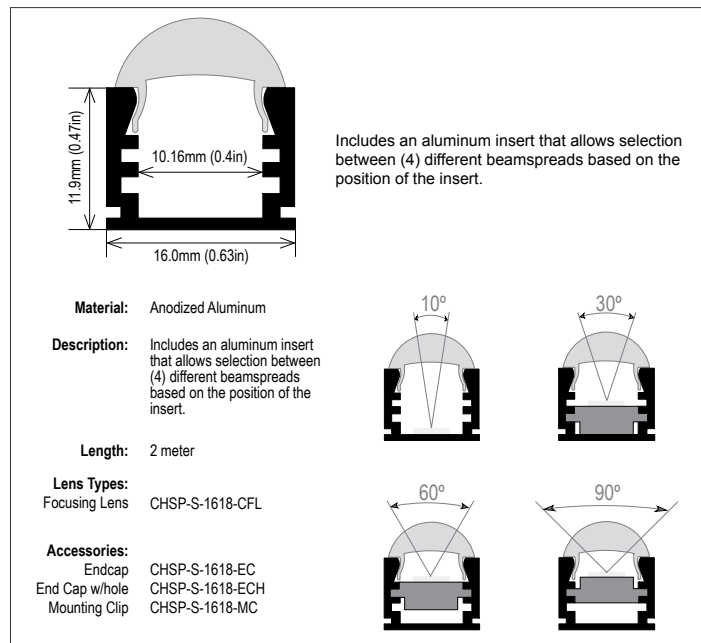
CHANNEL TYPE	SUSPENSION HEIGHT
2027, 3561	Up to 3' (914.40mm)

SPECIALTY CHANNEL Special

CHSP-R-2970



CHSP-S-1618



CHSP-STEP-8142

