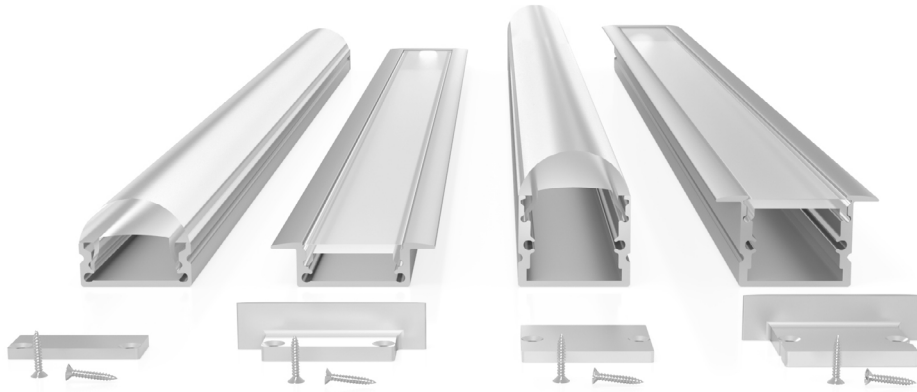


SMALL CHANNEL



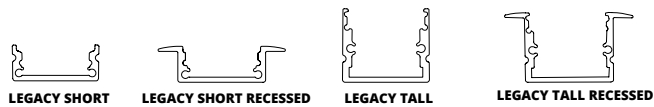
Small Anodized extrusions compatible with some **FLEX** light engines.

CHANNEL OPTIONS

MATERIAL	FINISHES	
Anodized aluminum	<ul style="list-style-type: none"> Satin Silver Deep Bronze Anodized¹ Matte Black Anodized¹ White Powder Coat Blue Powder Coat¹ 	<ul style="list-style-type: none"> Red Powder Coat¹ Gray Powder Coat¹ Chrome¹ Custom RAL Powder Coat¹

1: Special order finishes may increase order lead time and incur an added cost.

CHANNEL TYPE



COMBINATIONS

Note: All combinations come with fitted endcap for each end.

	LEGACY SHORT / LEGACY SHORT RECESSED ³ <small>(Previously Knows As CHS-S-1208 & CHS-R-1208)</small>	LEGACY SHORT WITH GRAZER LENS <small>(Previously Knows As CHS-S-1208-CG)</small>	LEGACY TALL / LEGACY TALL RECESSED ³ <small>(Previously Knows As CHS-S-1715 & CHS-R-1715)</small>	LEGACY TALL WITH GRAZER LENS <small>(Previously Knows As CHS-S-1715-CG)</small>
DIMENSIONS	<p>A: 0.68" (17.25mm) Recessed: B: 0.50" (12.59mm) D: 0.98" (25.00mm) C: 0.34" (8.60mm)</p>	<p>A: 0.68" (17.25mm) B: 0.50" (12.59mm) C: 0.59" (14.00mm)</p>	<p>A: 0.68" (17.25mm) Recessed: B: 0.48" (12.30mm) D: 0.98" (25.00mm) C: 0.59" (15.05mm)</p>	<p>A: 0.68" (17.25mm) B: 0.50" (12.59mm) C: 0.81" (28.55mm)</p>
BLENDED FLEX W/MILKY LENS	—	—	<ul style="list-style-type: none"> FLEX DC[®] 30 FLEX STP 20² FLEX STP 40² 	<ul style="list-style-type: none"> FLEX STP 70² FLEX STP RGBW FLEX STP VW²
CENTER BLENDED FLEX W/MILKY LENS	<ul style="list-style-type: none"> FLEX STP 20² FLEX STP 40² 	<ul style="list-style-type: none"> FLEX STP 70² 	—	—
NOT BLENDED	<ul style="list-style-type: none"> FLEX DC[®] 15² FLEX DC[®] 22² FLEX DC[®] 30² FLEX DC[®] 44² 	<ul style="list-style-type: none"> FLEX DC[®] 44 RGBW² FLEX DC[®] QUAD² FLEX STP RGBW FLEX STP VW² 	<ul style="list-style-type: none"> FLEX DC[®] 15² FLEX DC[®] 22² FLEX DC[®] 30² FLEX DC[®] 44² FLEX DC[®] 44 RGBW² FLEX DC[®] QUAD² 	<ul style="list-style-type: none"> FLEX STP 20² FLEX STP 40² FLEX STP 70² FLEX STP RGBW FLEX STP VW²

2: IP20 (FLEX STP) or IP40 (FLEX DC) Only

3: Note: If FLEX Config 1, Surface Channel and Flat Lens are specified, FLEX Connect Housing is required for assembly. Dimensions of FLEX Connect Housing can be found on page 2.

PART NUMBER BUILDER

CHANNEL	CHANNEL SIZE	CHANNEL TYPE	FINISH	LENS TYPE	LENS DIFFUSION	MOUNTING
CH-SM = Channel Small	LS = Legacy Short LT = Legacy Tall	SF = Surface RE = Recessed	SS = Satin Silver MB = Matte Black Anodized ¹ BZ = Deep Bronze Anodized ¹ WH = White Powder Coat ¹ GY = Gray Powder Coat ¹ BL = Blue Powder Coat ¹ RD = Red Powder Coat ¹ YL = Yellow Powder Coat ¹ CH = Chrome ¹ CR = Custom RAL Powder Coat ¹	FL = Flat GZ = Grazer	CC = Clear ⁴ CF = Frosted CM = Milky ⁴ <small>*Leave Blank for Grazer</small>	NA = Direct Surface MC = Mounting Clip ³ RC = Rotating Clip ³
			<small>1: Special order finishes may increase order lead time and incur an added cost.</small>		<small>4: Not compatible with Grazer Lens Type.</small>	<small>3: Not compatible with recessed options</small>

716 Monterey Pass Rd, Monterey Park, CA 91754

213.250.6069 | info@opticsarts.com | www.opticsarts.com

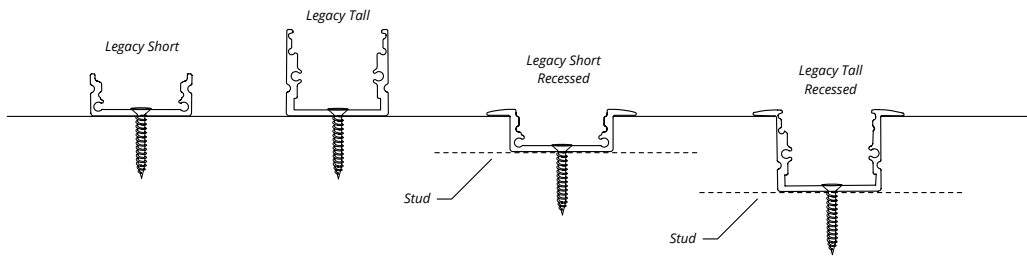
Optic Arts reserves the right to modify this specification without prior notice.

Last Modified: March 19, 2019 4:19 PM

SMALL CHANNEL

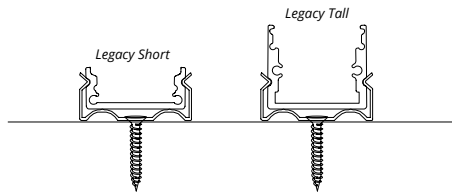
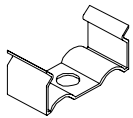
MOUNTING OPTIONS

DIRECT SURFACE



MOUNTING CLIP

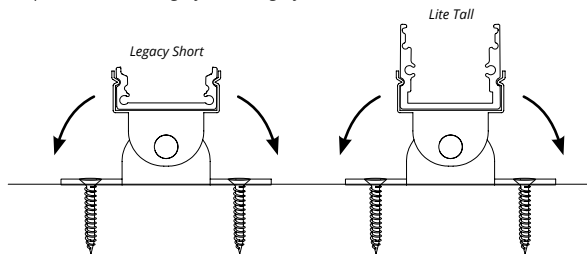
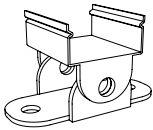
Compatible Channel: Legacy Short, Legacy Tall



CHANNEL TYPE	DIMENSIONS W/CLIP
Legacy Short	H: 0.40" (12.70mm); W: 0.78" (19.90mm)
Legacy Tall	H: 0.66" (16.76mm); W: 0.78" (19.90mm)

ROTATING CLIP

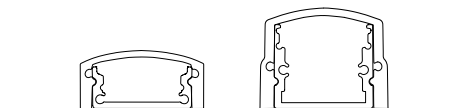
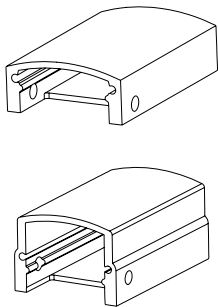
Compatible Channel: Legacy Short, Legacy Tall



CHANNEL TYPE	DIMENSIONS W/CLIP
Legacy Short	H: 1.15" (29.10mm); W: 1.41" (35.87mm)
Legacy Tall	H: 1.40" (35.55mm); W: 0.78" (35.87mm)

FLEX CONNECT HOUSING

Note: FLEX Connect Housing are only compatible with Surface Channels and Flat Lens.



CHANNEL TYPE	DIMENSIONS W/CLIP
Legacy Short	H: 0.40" (10.16mm); W: 0.89" (22.61mm); L: 1.39" (35.31mm)
Legacy Tall	H: 0.65" (16.51mm); W: 0.89" (22.61mm); L: 1.39" (35.31mm)