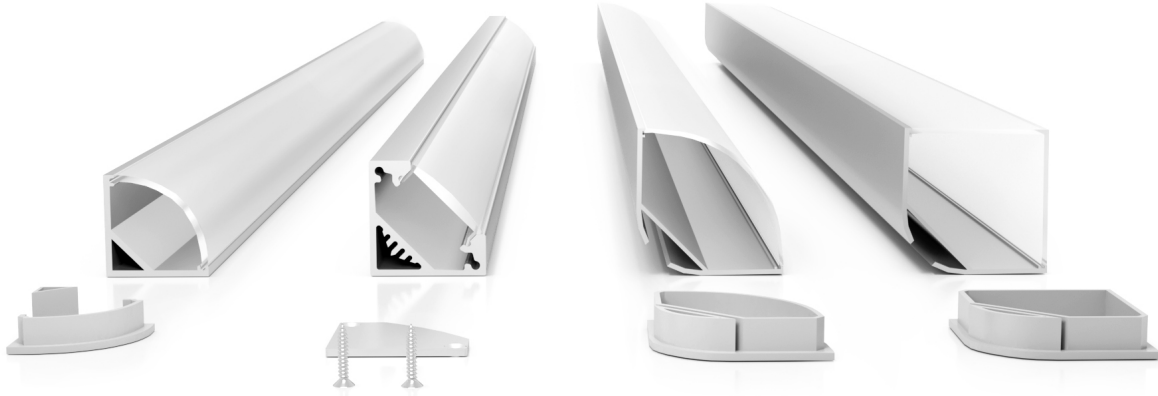


CORNER CHANNEL



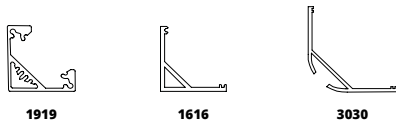
Corner anodized extrusions compatible with most **FLEX** light engines.

CHANNEL OPTIONS

MATERIAL	FINISHES	
Anodized aluminum	<ul style="list-style-type: none"> Satin Silver Deep Bronze Anodized¹ Matte Black Anodized¹ White Powder Coat Blue Powder Coat¹ 	<ul style="list-style-type: none"> Red Powder Coat¹ Gray Powder Coat¹ Chrome¹ Custom RAL Powder Coat¹

¹: Special order finishes may increase order lead time and incur an added cost.

CHANNEL TYPE

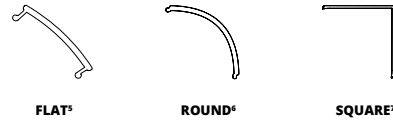


LENS OPTIONS

MATERIAL	DIFFUSION		
Polycarbonate			
	Milky	Frosted	Clear ⁴

⁴: Not compatible with 1616 and 1919 Channel Size.

LENS TYPE



⁵: Only compatible with 1919 Channel Size. ⁷: Only compatible with 3030 Channel Size.
⁶: Only compatible with 1616 and 3030 Channel Size.

COMBINATIONS

Note: All combinations come with fitted endcap for each end.

DIMENSIONS	CHS-C-1919 <i>(Previously Known As CHS-C-1919)</i> A: 0.73" (18.50mm) B: 0.48" (12.20mm) C: 0.73" (18.50mm)	CHS-C-1616 A: 0.63" (16.00mm) B: 0.39" (10.00mm) C: 0.63" (16.00mm)	CHW-C-3030 / CHW-C-3030S A: 1.18" (30.00mm) B: 0.78" (20.20mm) C: 1.18" (30.00mm)	
BLENDED FLEX W/MILKY LENS	—	—	• FLEX DC [®] 30	• FLEX DC [®] 30 • FLEX DC [®] 44 • FLEX STP RGBW ²
CENTER BLENDED FLEX W/MILKY LENS	• FLEX STP 20 ² • FLEX STP 40 ²	• FLEX STP 70 ²	• FLEX STP 20 • FLEX STP 40	• FLEX STP 70 • FLEX STP 20 • FLEX STP 40 • FLEX STP 70 • FLEX STP VW • FLEX STP RGBW
NOT BLENDED	• FLEX DC [®] 15 • FLEX DC [®] 22 ² • FLEX DC [®] 30	• FLEX DC [®] 44 ² • FLEX STP VW ² • FLEX STP RGBW ²	• FLEX DC [®] 15 • FLEX DC [®] 22 • FLEX DC [®] 30 • FLEX DC [®] 44	• FLEX DC [®] 44 • FLEX STP VW • FLEX STP RGBW • FLEX DC [®] 15 • FLEX DC [®] 22 • FLEX DC [®] 44 • FLEX DC [®] 44 RGBW • FLEX DC [®] 88 • FLEX DC [®] 88 RGBW ² • FLEX DC [®] QUAD • FLEX DC [®] QUAD • FLEX DC [®] 88 • FLEX DC [®] 88 RGBW ² • FLEX DC [®] 22 • FLEX DC [®] 44 RGBW • FLEX DC [®] 88

²: IP20 (FLEX STP) or IP40 (FLEX DC) Only

PART NUMBER BUILDER

CHANNEL	CHANNEL TYPE	CHANNEL SIZE	LENS DIFFUSION	FINISH	MOUNTING
CHS = Channel Small ¹ CHW = Channel Wide ²	C = Corner	1919 = H 18.5mm x W 18.5mm 1616 = H 16.0mm x W 16.0mm 3030 = H 30.0mm x W 30.0mm 3030S = H 30.0mm x W 30.0mm Square	C = Clear ⁴ F = Frosted M = Milky	SS = Satin Silver MB = Matte Black Anodized ³ BZ = Deep Bronze Anodized ³ WH = White Powder Coat ³ GY = Gray Powder Coat ³ BL = Blue Powder Coat ³ RD = Red Powder Coat ³ CH = Chrome ³ CR = Custom RAL Powder Coat ³	MC = Mounting Clip

¹: Only available with 1919 & 1616 Channel Size. ³: Special order finishes may increase order lead time and incur an added cost.
²: Only available with 3030 Channel Size. ⁴: Not compatible 1616 and 1919 Channel Size.

716 Monterey Pass Rd, Monterey Park, CA 91754

213.250.6069 | info@opticsarts.com | www.opticsarts.com

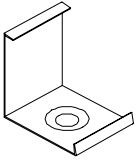


CORNER CHANNEL

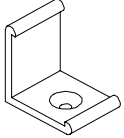
MOUNTING OPTIONS

MOUNTING CLIP

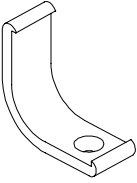
CHS-C-1616-MC



CHS-C-1919-MC

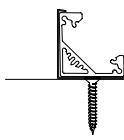


CHS-C-3030-MC

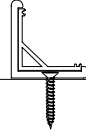


Compatible Channel: Surface Channels

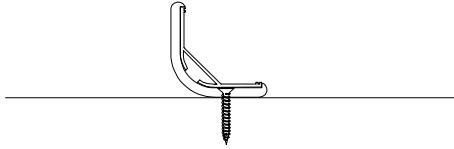
1616



1919



3030



CHANNEL TYPE

DIMENSIONS W/CLIP

1919	H: 0.82" (20.82mm); W: 0.82" (20.82mm)
1616	H: 0.70" (17.78mm); W: 0.70" (17.78mm)
3030	H: 1.29" (32.77mm); W: 1.29" (32.77mm)