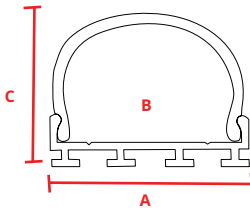




PHYSICAL

Description	Surface mounted channel with wrap around lens.
Material	Anodized Aluminum
Lens Cover	Polycarbonate
Width	A: 1.03" (26.20mm)
Inner Width	B: 0.80" (20.35mm)
Height	C: 0.89" (22.76mm)
Length	2 meters

DIMENSIONS



FINISH

Satin Silver	Red Powder Coat*
Deep Bronze Anodized*	Gray Powder Coat*
Matte Black Anodized*	Chrome*
White Powder Coat*	Custom RAL Powder Coat*
Blue Powder Coat*	

*Special order finishes may increase order lead time and incur an added cost

ACCESSORIES

	PART #
Plastic End Cap	CHW-S-2623-EC
Plastic End Cap w/Hole	CHW-S-2623-ECH
Milky Lens	CHW-S-2623-CM

COMPATIBLE FLEX PRODUCTS

	Not Blended	Blended w/Milky Lens
FLEX DC 15		FLEX DC 22
FLEX DC 30		FLEX DC 44
FLEX DC 88		FLEX 44 RGBW
FLEX DC 88 RGBW <i>Fits IP40 only</i>		FLEX DC QUAD
FLEX STP 73 <i>IP20 only</i>		FLEX STP RGBW <i>IP20 only</i>
FLEX STP VARIABLE WHITE <i>IP20 only</i>		FLEX DC VARIABLE WHITE
FLEX STP 40 <i>IP20 only</i>		FLEX STP 20 <i>IP20 only</i>

PART NUMBER BUILDER

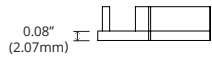
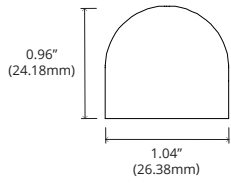
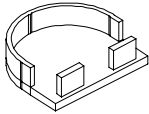
SERIES	+	CHANNEL TYPE	+	DIMENSIONS	+	LENS	+	FINISH
CHW = Channel Wide		S = Surface Mounted Channel		2623 = H 23.00mm x W 26.00mm		2M = Milky Lens		SL = Satin Silver *MB = Matte Black Anodized *BZ = Deep Bronze Anodized *WH = White Powder Coat *GY = Gray Powder Coat *BL = Blue Powder Coat *RD = Red Powder Coat *YL = Yellow Powder Coat *CH = Chrome *CR = Custom RAL Powder Coat

*Special order finishes may increase order lead time and incur an added cost

ACCESSORIES

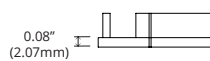
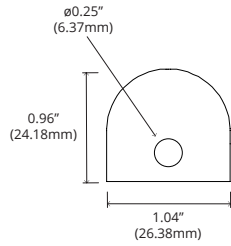
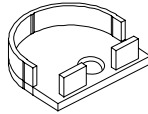
CHW-S-2623-EC

Plastic End Cap



CHW-S-2623-ECH

Plastic End Cap w/Hole



CHW-S-2623-CM

Milky Lens

