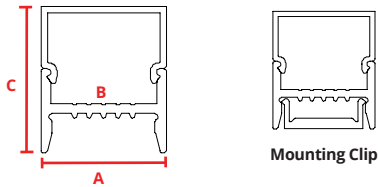


PHYSICAL

Description	Slim surface mounted channel with square wrap around lens. Mounting clip is fully concealed within fixture base.
Material	Anodized Aluminum
Lens Cover	Polycarbonate
Width	A: 0.77" (19.50mm)
Inner Width	B: 0.65" (16.50mm)
Height	C: 0.86" (21.80mm)
Length	2 meters

DIMENSIONS



*See Physical for correlating dimensions

FINISH

Satin Silver	Red Powder Coat*
Deep Bronze Anodized*	Gray Powder Coat*
Matte Black Anodized*	Chrome*
White Powder Coat*	Custom RAL Powder Coat*
Blue Powder Coat*	

*Special order finishes may increase order lead time and incur an added cost

ACCESSORIES

Plastic End Cap	CHS-S-1922S-EC
Plastic End Cap w/Hole	CHS-S-1922S-ECH
Mounting Clip	CHS-S-1922S-MC
Milky Lens	CHS-S-1922S-CM

PART

COMPATIBLE FLEX PRODUCTS



Not Blended



Blended w/Milky Lens

FLEX DC 15		FLEX DC 22	
FLEX DC 30		FLEX DC 44	
FLEX DC 88 <i>Fits IP40 only</i>		FLEX DC 44 RGBW <i>Fits IP40 only</i>	
FLEX DC QUAD		FLEX STP RGBW <i>IP20 only</i>	
FLEX STP 73 <i>IP20 only</i>		FLEX STP VARIABLE WHITE <i>IP20 only</i>	
FLEX DC VARIABLE WHITE		FLEX STP 40 <i>IP20 only</i>	
FLEX STP 20 <i>IP20 only</i>			

PART NUMBER BUILDER

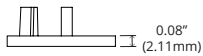
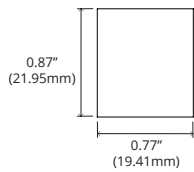
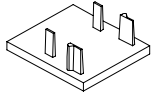
SERIES CHS = Channel Slim	+	CHANNEL TYPE S = Surface Mount Channel	+	DIMENSIONS 1922 = H 19.00mm x W 22.00mm	+	LENS 2M = Milky Lens	+	FINISH SL = Satin Silver *MB = Matte Black Anodized *BZ = Deep Bronze Anodized *WH = White Powder Coat *GY = Gray Powder Coat *BL = Blue Powder Coat *RD = Red Powder Coat *YL = Yellow Powder Coat *CH = Chrome *CR = Custom RAL Powder Coat
-------------------------------------	---	--	---	---	---	--------------------------------	---	--

*Special order finishes may increase order lead time and incur an added cost

ACCESSORIES

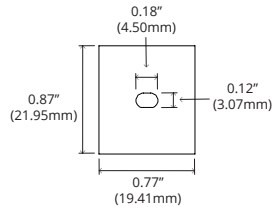
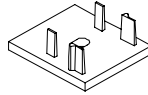
CHS-S-1922S-EC

Plastic End Cap



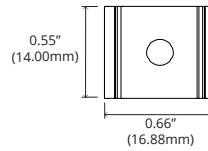
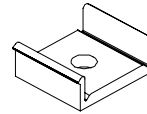
CHS-S-1922S-ECH

Plastic End Cap w/Hole



CHS-S-1922S-MC

Mounting Clip



CHS-S-1922S-CM

Milky Lens

