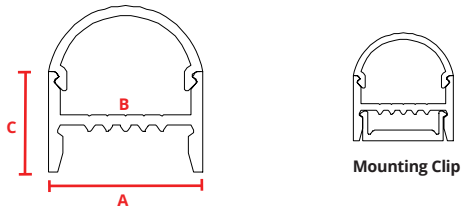




PHYSICAL

Description	Slim surface mounted channel with rounded wrap around lens. Mounting clip is fully concealed within fixture base.
Material	Anodized Aluminum
Lens Cover	Polycarbonate
Width	A: 0.77" (19.50mm)
Inner Width	B: 0.65" (16.50mm)
Height	C: 0.86" (21.80mm)
Length	2 meters

DIMENSIONS



*See Physical for correlating dimensions

FINISH

Satin Silver	Red Powder Coat*
Deep Bronze Anodized*	Gray Powder Coat*
Matte Black Anodized*	Chrome*
White Powder Coat*	Custom RAL Powder Coat*
Blue Powder Coat*	

*Special order finishes may increase order lead time and incur an added cost

ACCESSORIES

	PART #
Plastic End Cap	CHS-S-1922R-EC
Plastic End Cap w/Hole	CHS-S-1922R-ECH
Mounting Clip	CHS-S-1922R-MC
Milky Lens	CHS-S-1922R-CM

COMPATIBLE FLEX PRODUCTS

	Not Blended	Blended w/Milky Lens
FLEX DC 15		FLEX DC 22
FLEX DC 30		FLEX DC 44
FLEX DC 88 <i>Fits IP40 only</i>		FLEX DC 44 RGBW
FLEX DC QUAD		FLEX STP RGBW <i>IP20 only</i>
FLEX STP 73 <i>IP20 only</i>		FLEX STP VARIABLE WHITE <i>IP20 only</i>
FLEX DC VARIABLE WHITE		FLEX STP 40 <i>IP20 only</i>
FLEX STP 20 <i>IP20 only</i>		

PART NUMBER BUILDER

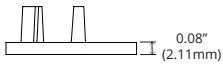
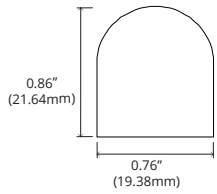
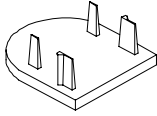
SERIES	+	CHANNEL TYPE	+	DIMENSIONS	+	LENS	+	FINISH
CHS = Channel Slim		S = Surface Mount Channel		1922 = H 19.00mm x W 22.00mm		2M = Milky Lens		SL = Satin Silver *MB = Matte Black Anodized *BZ = Deep Bronze Anodized *WH = White Powder Coat *GY = Gray Powder Coat *BL = Blue Powder Coat *RD = Red Powder Coat *YL = Yellow Powder Coat *CH = Chrome *CR = Custom RAL Powder Coat

*Special order finishes may increase order lead time and incur an added cost

ACCESSORIES

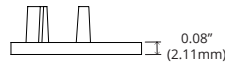
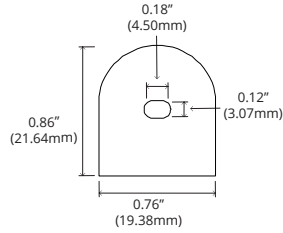
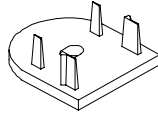
CHS-S-1922R-EC

Plastic End Cap



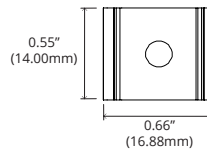
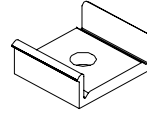
CHS-S-1922R-ECH

Plastic End Cap w/Hole



CHS-S-1922R-MC

Mounting Clip



CHS-S-1922R-MC

Milky Lens

