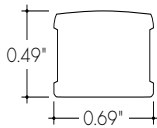


Features



- 24VDC Class 2 and IP68 rated for wet locations, fixtures made to order up to 144". Fixtures can be linked up to 48' depending on output
- Suitable for undercabinet, millwork, surface mount, direct view, cove, outdoor, wet, architectural reveals, and accent lighting applications
- Dot free even illumination with frosted lens
- High Color Quality options offer premium quality and vibrant colors with R9 values up to 97
- High Efficacy options offer best in class output and efficacy with over 590 lm/ft and over 80 lm/W
- Proprietary strong bond solder method handles up to 50 lbs of pull force on wire leads and connectors
- 3 Year warranty



Finish Options (see page 2 for additional information)

- | | | |
|-----------------|-------------|---------------|
| Silver Anodized | White | Aged Brass |
| Black | Matte Black | Polished Gold |
| Bronze | Warm Nickel | Chrome |



Technical Information

| MODEL | High Color Quality | | | High Efficacy | | | | High Efficacy |
|---|--------------------|-----------|--------------|---------------|-----------|--------------|-----------|---------------|
| | 72SO | 72HO | 72VHO | HE48LO | HE48SO | HE48MO | HE48HO | HE64VHO |
| OUTPUT OPTIONS | | | | | | | | |
| Lumens Output (3000K) <small>(with a Clear Lens)</small> | 163 lm/ft | 265 lm/ft | 323 lm/ft | 159 lm/ft | 220 lm/ft | 294 lm/ft | 472 lm/ft | 597 lm/ft |
| Average Power Consumption <small>(for a 4" section)</small> | 2.8 W/ft | 4.8 W/ft | 6 W/ft | 1.9 W/ft | 2.8 W/ft | 3.5 W/ft | 6.5 W/ft | 7.5 W/ft |
| Efficacy | 58 lm/W | 55 lm/W | 54 lm/W | 84 lm/W | 79 lm/W | 84 lm/W | 73 lm/W | 80 lm/W |
| Max Run Length <small>(in series)</small> | 40 ft | 31 ft | 22 ft | 48 ft | 42 ft | 33 ft | 21 ft | 15 ft |
| Max Ambient Temperature* | 50°C [122°F] | | 48°C [118°F] | 50°C [122°F] | | 45°C [113°F] | | 39°C [102°F] |

*Max Ambient Temperature to maintain L70 of 50k+ hours. Exceeding Max Ambient Temperature may result in decreased life/output. Consult Technical Support for specific inquiries.

High Color Quality (72)

| CCT | Multiplier <small>(reference - 3000K)</small> | TM-30 | | | |
|-------|--|-------|----------------|----------------|----------------|
| | | CRI | R _f | R _g | R ₉ |
| 2700K | 0.97 | 97 | 96 | 99 | 93 |
| 3000K | 1.00 | 96 | 95 | 99 | 92 |
| 3500K | 1.01 | 96 | 95 | 100 | 94 |
| 4000K | 1.34 | 97 | 96 | 102 | 92 |

High Efficacy (HE48/HE64)

| CCT | Multiplier <small>(reference - 3000K)</small> | TM-30 | | | |
|-------|--|-------|----------------|----------------|----------------|
| | | CRI | R _f | R _g | R ₉ |
| 2700K | 0.94 | 92 | 90 | 99 | 46 |
| 3000K | 1.00 | 92 | 89 | 99 | 62 |
| 3500K | 1.02 | 92 | 89 | 99 | 58 |
| 4000K | 1.02 | 92 | 86 | 94 | 52 |

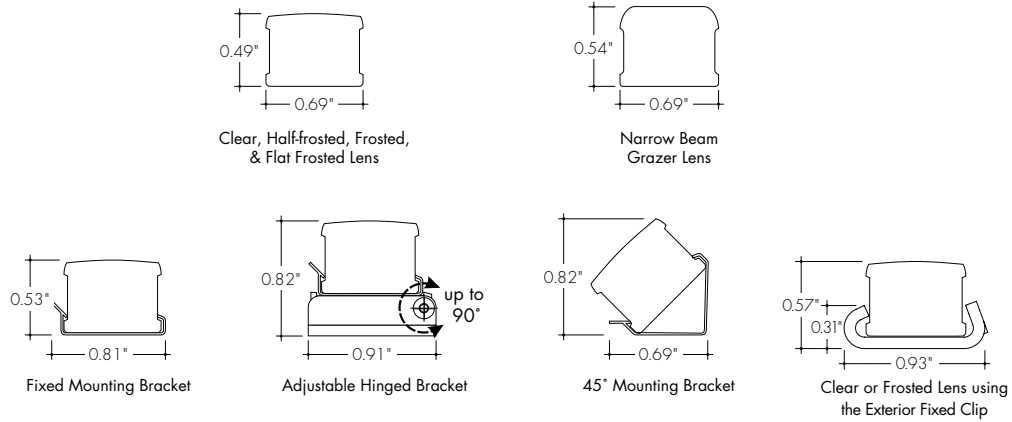
Ordering Code

| MODEL | LENGTH ¹ | OUTPUT | CCT | LENS ² | MOUNTING | FINISH ³ | POSITION | POWER FEED | ACCESSORIES |
|-------------------|-----------------------------|--|--|---|--|--|---------------------------------|---|--|
| KMW - Kendo M Wet | 12" - 144" 1" increments | 72SO - Standard 72HO - High 72VHO - Very High | 27K - 2700K 30K - 3000K 35K - 3500K 40K - 4000K | C - Clear F - Frosted GR - Narrow Beam Grazer | FC - Fixed Clip A - Adjustable Hinge Mounting FC45 - Fixed Clip 45° EFC - Tamper Resistant Fixed Clip | SA - Silver Anodized BK - Black BZ - Bronze WH - White MB - Matte Black WN - Warm Nickel LB - Light Brass PG - Polished Gold ⁴ CH - Chrome ⁴ | E - End B - Back S - Side | 1 - 72" wire leads IX2 - 72" wire leads at both ends 2 - 72" wire leads at one end and Quick Connect at other 3 - Single Quick Connect 4 - Quick Connect at both ends | --- - N/A, leave blank BLS - Blade louver, Silver BLBK - Blade louver, Black BLWH - Blade louver, White GSS - Glare shield, Silver GSBK - Glare shield, Black GSWH - Glare shield, White |
| | 12" - 144" 2" increments | HE48LO - Low HE48SO - Standard HE48MO - Medium HE48HO - High HE64VHO - Very High | 27K - 2700K 30K - 3000K 35K - 3500K 40K - 4000K | | | | | | |

1 - Custom lengths and increments are available, please consult Inside Sales with specific request.
2 - All High Efficacy options can be used to comply with Title 24 JA8. High Color Quality options can be used to comply with Title 24 JA8 depending on Output, CCT, and lens selections, see multiplier charts to calculate specific efficacies.

3 - Non SA finishes may have extended lead times. Custom RALs are available, please consult Inside Sales with specific request.
4 - Polished Gold finishes have a maximum fixture length of 48", and Chrome finishes have a maximum fixture length of 72".

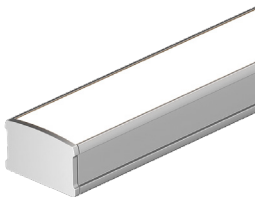
Product Dimensions



Finish Options

- Finish options are available in a wide variety, allowing for complete customization of style and aesthetic.
- Non Silver Anodized finishes may have extended lead times.
- Polished Gold finishes have a maximum fixture length of 48", and Chrome finishes have a maximum fixture length of 72".
- Custom RALs are available, please consult Inside Sales with specific request.

Silver Anodized



Silver Anodized is a soft silver with a clear finish.

Black



Black is a true deep black with a glossy finish.

Bronze



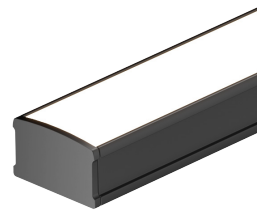
Bronze is a rich, dark brown with a satin finish.

White



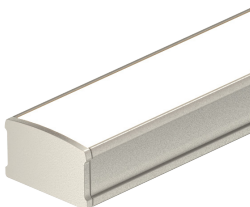
White is a polar bright white and field paintable.

Matte Black



Matte Black is a dark, pitch-black with a soft flat finish.

Warm Nickel



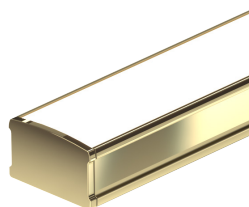
Warm Nickel is a soft, silvery smoke with warm tones and a satin finish.

Aged Brass



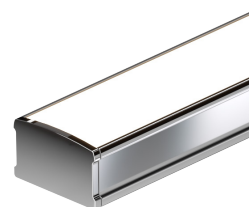
Aged Brass is a deep brown shade with slightly golden undertones.

Polished Gold



Polished Gold is bright and radiant for a brilliant finish.

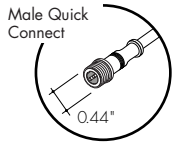
Chrome



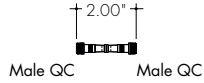
Chrome is a highly reflective silver polish.

Powerfeeds and Connectors

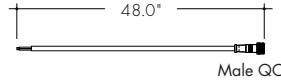
Linking and Extension Cable Options



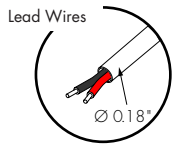
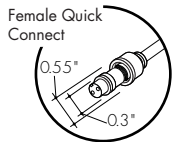
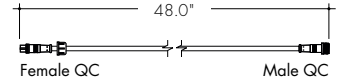
WET-FMA-2-2
Female to Male Adapter, 2 pin



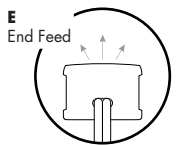
WET-CON-LEAD-M-2-48
Male Wet Connector Cable, 2 pin, 48"



WET-CON-JC-F-M-2-48
Female/Male Wet Jumper Cable, 2 pin, 48"



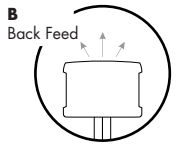
Powerfeeds Position/Type



1
72" wire leads



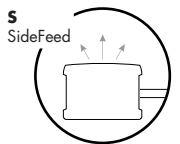
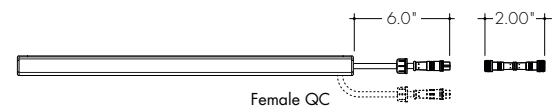
1X2
72" wire leads at both ends



2
72" wire leads at one end and Female Quick Connect at other



3
Single Female Quick Connect

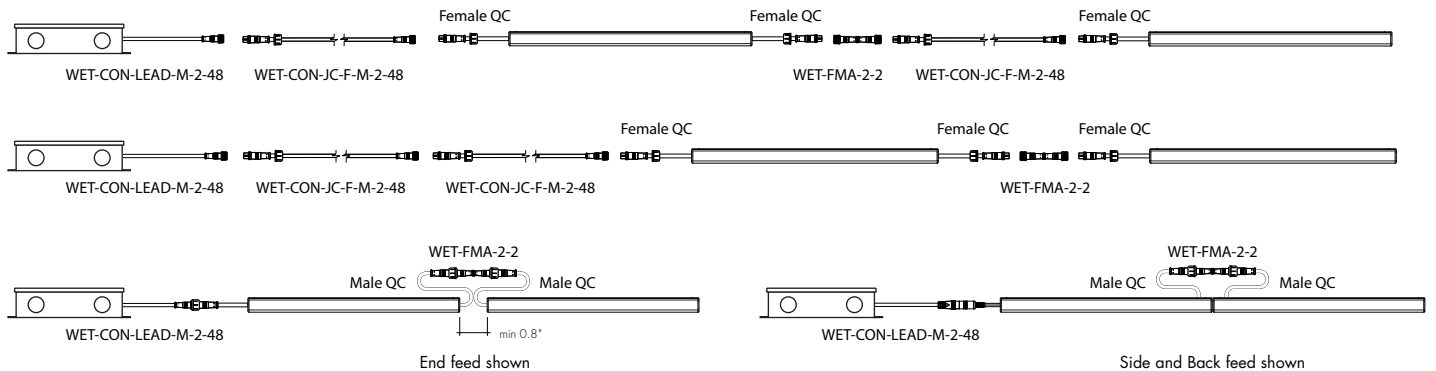


4
Female Quick Connect at both ends



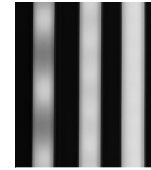
Side and Back feeds shown as dashed lines
All wires are 18 AWG unless otherwise specified

Sample Layout



Light Transmission and Dotting

| Output Options | Lens/Accessory | | | | |
|--------------------------------|----------------|-------------------------|---------------------------------|--------------|---------------------------------|
| | Clear Lens | Narrow Beam Grazer Lens | Grazer Lens, White Glare Shield | Frosted Lens | Grazer Lens, White Blade Louver |
| 72SO | CD | CD | CD | ND | CD |
| 72HO | CD | CD | CD | ND | CD |
| 72VHO | CD | CD | CD | ND | CD |
| HE48LO | CD | CD | CD | ND | CD |
| HE48SO | CD | CD | CD | ND | CD |
| HE48MO | CD | CD | CD | ND | CD |
| HE48HO | CD | CD | CD | ND | CD |
| HE64VHO | CD | CD | CD | ND | CD |
| Transmission Percentage | 100% | 87% | 63% | 49% | 47% |

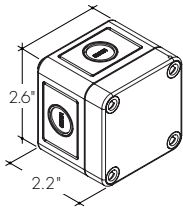


CD SD ND
 CD - Clear Dotting
 SD - Slight Dotting
 ND - No Dotting

Accessory Options

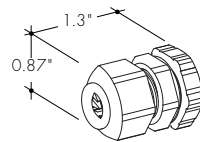
LVSP-WET

Splice box: wet rated, low voltage, gray



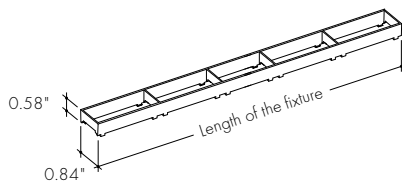
LVSP-WET-CM

Connector for splice box, low voltage for cable management, gray.



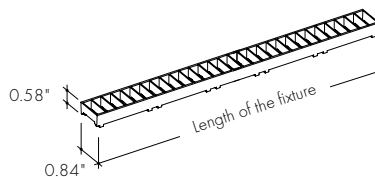
LV-GS-KMSC-24-XX

Glare Shield reduces glare at high angle, field cuttable. Also available with complete fixture, use ordering code **-GSXX**



LV-BL-KMSC-24-XX

Blade Louver reduces glare at high angle in two directions. Also available with complete fixture, use ordering code **-BLXX**



| XX | Color |
|----|--------|
| WH | White |
| BK | Black |
| SL | Silver |

Photometry

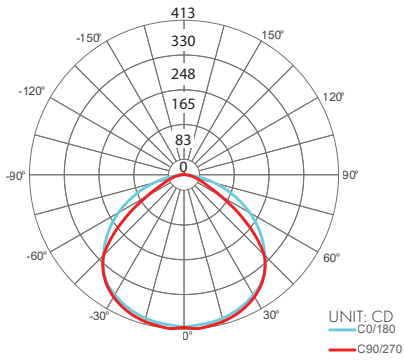
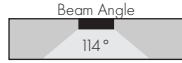
KMW-48-72VHO-30K-C

Kendo M Wet, 4ft, 3000K, VHO, Clear Lens

Zonal Lumen Summary 3000K

| Zone | Lumen | % Fixture |
|-------|-------|-----------|
| 0-30 | 358 | 27.7% |
| 0-40 | 601 | 46.6% |
| 0-60 | 1059 | 82.1% |
| 0-90 | 1277 | 98.9% |
| 0-180 | 1290 | 100.0% |

Total



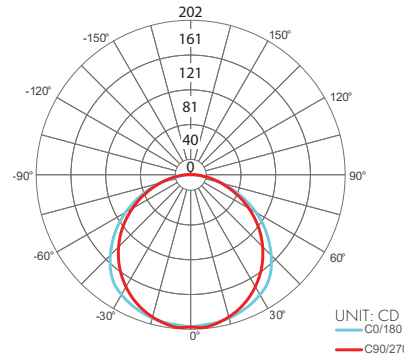
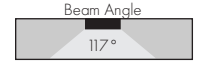
KMW-48-72VHO-30K-F

Kendo M Wet, 4ft, 3000K, VHO, Frosted Lens

Zonal Lumen Summary 3000K

| Zone | Lumen | % Fixture |
|-------|-------|-----------|
| 0-30 | 160 | 25.4% |
| 0-40 | 265 | 42.2% |
| 0-60 | 478 | 76.2% |
| 0-90 | 620 | 98.7% |
| 0-180 | 628 | 100.0% |

Total



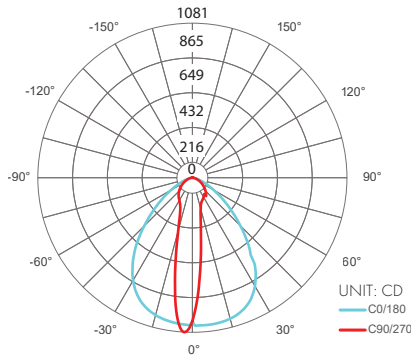
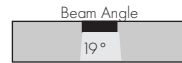
KMW-48-72VHO-30K-GR

Kendo RM Wet, 4ft, 3000K, VHO, Narrow Beam Grazer Lens

Zonal Lumen Summary 3000K

| Zone | Lumen | % Fixture |
|-------|-------|-----------|
| 0-30 | 467 | 41.7% |
| 0-40 | 666 | 59.5% |
| 0-60 | 971 | 86.8% |
| 0-90 | 1104 | 98.7% |
| 0-180 | 1118 | 100.0% |

Total



Power Consumption

Tested at Full Power with PDC Series power supplies.

Standard Nominal Lengths offered provide minimal shadowing. For alternate lengths, please contact factory with specific request.

High Color Quality (72)

| Nominal Length (in) | Back, Side, and End Feed Actual Length | Watts | | | Nominal Length (in) | Back, Side, and End Feed Actual Length | Watts | | | Nominal Length (in) | Back, Side, and End Feed Actual Length | Watts | | | Nominal Length (in) | Back, Side, and End Feed Actual Length | Watts | | |
|---------------------|--|-------|------|------|---------------------|--|-------|------|------|---------------------|--|-------|------|------|---------------------|--|-------|------|------|
| | | SO | HO | VHO | | | SO | HO | VHO | | | SO | HO | VHO | | | SO | HO | VHO |
| 12 | 11 5/16 | 2.7 | 4.4 | 6.2 | 47 | 46 1/16 | 10.2 | 17.1 | 22.6 | 82 | 81 15/16 | 18.3 | 29.5 | 38.4 | 117 | 116 11/16 | 25.9 | 40.8 | 52.4 |
| 13 | 12 7/16 | 2.7 | 4.4 | 6.2 | 48 | 47 3/16 | 10.5 | 17.4 | 23.1 | 83 | - | - | - | - | 118 | 117 13/16 | 26.1 | 41.1 | 52.8 |
| 14 | 13 10/16 | 2.9 | 4.8 | 6.7 | 49 | 48 6/16 | 10.7 | 17.8 | 23.5 | 84 | 83 1/16 | 18.5 | 29.8 | 38.8 | 119 | 119 | 26.3 | 41.4 | 53.2 |
| 15 | 14 12/16 | 3.1 | 5.2 | 7.3 | 50 | 49 8/16 | 11.1 | 18.6 | 24.4 | 85 | 84 4/16 | 18.7 | 30.1 | 39.2 | 120 | - | - | - | - |
| 16 | 15 15/16 | 3.4 | 5.6 | 7.8 | 51 | 50 11/16 | 11.4 | 18.9 | 24.9 | 86 | 85 6/16 | 19.2 | 30.8 | 40.0 | 121 | 120 2/16 | 26.5 | 41.7 | 53.6 |
| 17 | - | - | - | - | 52 | 51 13/16 | 11.6 | 19.3 | 25.3 | 87 | 86 9/16 | 19.4 | 31.1 | 40.4 | 122 | 121 5/16 | 26.7 | 42.0 | 54.0 |
| 18 | 17 1/16 | 3.6 | 6.0 | 8.3 | 53 | 53 | 11.9 | 19.7 | 25.7 | 88 | 87 12/16 | 19.6 | 31.5 | 40.8 | 123 | 122 7/16 | 27.1 | 42.6 | 54.7 |
| 19 | 18 4/16 | 3.9 | 6.5 | 8.9 | 54 | - | - | - | - | 89 | 88 14/16 | 19.9 | 31.8 | 41.1 | 124 | 123 10/16 | 27.3 | 42.9 | 55.0 |
| 20 | 19 6/16 | 4.4 | 7.3 | 9.9 | 55 | 54 2/16 | 12.1 | 20.1 | 26.1 | 90 | - | - | - | - | 125 | 124 12/16 | 27.5 | 43.1 | 55.4 |
| 21 | 20 9/16 | 4.6 | 7.7 | 10.5 | 56 | 55 5/16 | 12.3 | 20.5 | 26.6 | 91 | 90 1/16 | 20.1 | 32.2 | 41.5 | 126 | 125 15/16 | 27.7 | 43.4 | 55.7 |
| 22 | 21 11/16 | 4.8 | 8.1 | 11.0 | 57 | 56 7/16 | 12.8 | 21.3 | 27.4 | 92 | 91 3/16 | 20.4 | 32.5 | 41.9 | 127 | - | - | - | - |
| 23 | 22 14/16 | 5.1 | 8.6 | 11.5 | 58 | 57 10/16 | 13.1 | 21.6 | 27.8 | 93 | 92 6/16 | 20.6 | 32.9 | 42.3 | 128 | 127 1/16 | 27.9 | 43.7 | 56.1 |
| 24 | - | - | - | - | 59 | 58 12/16 | 13.3 | 22.0 | 28.3 | 94 | 93 8/16 | 21.1 | 33.6 | 43.1 | 129 | 128 4/16 | 28.1 | 43.9 | 56.4 |
| 25 | 24 1/16 | 5.3 | 9.0 | 12.1 | 60 | 59 15/16 | 13.6 | 22.4 | 28.7 | 95 | 94 11/16 | 21.3 | 33.9 | 43.4 | 130 | 129 7/16 | 28.5 | 44.5 | 57.1 |
| 26 | 25 3/16 | 5.6 | 9.4 | 12.6 | 61 | - | - | - | - | 96 | 95 13/16 | 21.5 | 34.2 | 43.8 | 131 | 130 9/16 | 28.7 | 44.7 | 57.4 |
| 27 | 26 6/16 | 5.8 | 9.8 | 13.1 | 62 | 61 1/16 | 13.8 | 22.8 | 29.1 | 97 | 97 | 21.8 | 34.6 | 44.2 | 132 | 131 12/16 | 28.9 | 45.0 | 57.8 |
| 28 | 27 8/16 | 6.2 | 10.5 | 14.1 | 63 | 62 4/16 | 14.0 | 23.1 | 29.6 | 98 | - | - | - | - | 133 | 132 14/16 | 29.1 | 45.3 | 58.1 |
| 29 | 28 11/16 | 6.5 | 10.9 | 14.5 | 64 | 63 6/16 | 14.5 | 23.8 | 30.5 | 99 | 98 2/16 | 22.0 | 34.9 | 44.6 | 134 | - | - | - | - |
| 30 | 29 13/16 | 6.7 | 11.2 | 15.0 | 65 | 64 9/16 | 14.7 | 24.1 | 31.0 | 100 | 99 5/16 | 22.2 | 35.2 | 45.0 | 135 | 134 1/16 | 29.3 | 45.5 | 58.4 |
| 31 | 31 | 6.9 | 11.6 | 15.5 | 66 | 65 12/16 | 14.9 | 24.4 | 31.4 | 101 | 100 7/16 | 22.5 | 35.9 | 45.9 | 136 | 135 3/16 | 29.5 | 45.7 | 58.7 |
| 32 | - | - | - | - | 67 | 66 14/16 | 15.1 | 24.7 | 31.9 | 102 | 101 10/16 | 22.7 | 36.2 | 46.3 | 137 | 136 6/16 | 29.6 | 45.9 | 59.1 |
| 33 | 32 2/16 | 7.1 | 12.0 | 16.0 | 68 | - | - | - | - | 103 | 102 12/16 | 22.9 | 36.5 | 46.7 | 138 | 137 8/16 | 30.0 | 46.3 | 59.7 |
| 34 | 33 5/16 | 7.3 | 12.3 | 16.5 | 69 | 68 1/16 | 15.3 | 25.0 | 32.4 | 104 | 103 15/16 | 23.1 | 36.8 | 47.1 | 139 | 138 11/16 | 30.2 | 46.5 | 60.0 |
| 35 | 34 7/16 | 7.8 | 13.1 | 17.4 | 70 | 69 3/16 | 15.5 | 25.4 | 32.8 | 105 | - | - | - | - | 140 | 139 13/16 | 30.3 | 46.8 | 60.3 |
| 36 | 35 10/16 | 8.0 | 13.4 | 17.9 | 71 | 70 6/16 | 15.8 | 25.7 | 33.3 | 106 | 105 1/16 | 23.3 | 37.1 | 47.5 | 141 | 141 | 30.5 | 47.0 | 60.6 |
| 37 | 36 12/16 | 8.2 | 13.8 | 18.4 | 72 | 71 8/16 | 16.2 | 26.3 | 34.2 | 107 | 106 4/16 | 23.5 | 37.4 | 48.0 | 142 | - | - | - | - |
| 38 | 37 15/16 | 8.4 | 14.2 | 18.9 | 73 | 72 11/16 | 16.4 | 26.6 | 34.7 | 108 | 107 6/16 | 23.9 | 38.1 | 48.8 | 143 | 142 2/16 | 30.7 | 47.2 | 61.0 |
| 39 | - | - | - | - | 74 | 73 13/16 | 16.6 | 26.9 | 35.1 | 109 | 108 9/16 | 24.1 | 38.4 | 49.2 | 144 | 143 5/16 | 30.8 | 47.4 | 61.3 |
| 40 | 39 1/16 | 8.7 | 14.5 | 19.3 | 75 | 75 | 16.8 | 27.3 | 35.5 | 110 | 109 12/16 | 24.3 | 38.7 | 49.6 | | | | | |
| 41 | 40 4/16 | 8.9 | 14.9 | 19.8 | 76 | - | - | - | - | 111 | 110 14/16 | 24.5 | 39.0 | 50.0 | | | | | |
| 42 | 41 6/16 | 9.3 | 15.6 | 20.7 | 77 | 76 2/16 | 17.1 | 27.6 | 35.9 | 112 | - | - | - | - | | | | | |
| 43 | 42 9/16 | 9.6 | 16.0 | 21.2 | 78 | 77 5/16 | 17.3 | 27.9 | 36.3 | 113 | 112 1/16 | 24.8 | 39.3 | 50.4 | | | | | |
| 44 | 43 12/16 | 9.8 | 16.4 | 21.7 | 79 | 78 7/16 | 17.7 | 28.5 | 37.2 | 114 | 113 3/16 | 25.0 | 39.6 | 50.8 | | | | | |
| 45 | 44 14/16 | 10.0 | 16.7 | 22.1 | 80 | 79 10/16 | 17.9 | 28.9 | 37.6 | 115 | 114 6/16 | 25.2 | 39.9 | 51.2 | | | | | |
| 46 | - | - | - | - | 81 | 80 12/16 | 18.1 | 29.2 | 38.0 | 116 | 115 8/16 | 25.6 | 40.5 | 52.0 | | | | | |

Power Consumption

Tested at Full Power with PDC Series power supplies.

Standard Nominal Lengths offered provide minimal shadowing. For alternate lengths, please contact factory with specific request.

High Efficacy (HE48)

| Nominal Length (in) | Back, Side, and End Feed Actual Length | Watts | | | | Nominal Length (in) | Back, Side, and End Feed Actual Length | Watts | | | | Nominal Length (in) | Back, Side, and End Feed Actual Length | Watts | | | | Nominal Length (in) | Back, Side, and End Feed Actual Length | Watts | | | |
|---------------------|--|-------|------|------|------|---------------------|--|-------|------|------|------|---------------------|--|-------|------|------|------|---------------------|--|-------|------|------|------|
| | | LO | SO | MO | HO | | | LO | SO | MO | HO | | | LO | SO | MO | HO | | | LO | SO | MO | HO |
| 12 | 10 11/16 | 1.7 | 2.5 | 3.5 | 5.7 | 47 | 46 2/16 | 6.9 | 10.7 | 13.3 | 24.7 | 82 | 81 9/16 | 12.5 | 19.9 | 23.9 | 42.2 | 117 | - | - | - | - | |
| 13 | 12 11/16 | 1.7 | 2.5 | 3.5 | 5.7 | 48 | - | - | - | - | - | 83 | - | - | - | - | - | 118 | 117 | 17.5 | 27.7 | 34.3 | 58.7 |
| 14 | - | - | - | - | - | 49 | 48 2/16 | 7.1 | 11.2 | 13.9 | 25.4 | 84 | 83 9/16 | 12.8 | 20.3 | 24.5 | 43.1 | 119 | 119 | 17.8 | 28.1 | 34.9 | 59.6 |
| 15 | 14 10/16 | 2.0 | 3.0 | 4.0 | 7.2 | 50 | - | - | - | - | - | 85 | - | - | - | - | - | 120 | - | - | - | - | - |
| 16 | - | - | - | - | - | 51 | 50 1/16 | 7.4 | 11.7 | 14.5 | 26.3 | 86 | 85 8/16 | 13.1 | 20.8 | 25.1 | 44.1 | 121 | 120 15/16 | 18.1 | 28.6 | 35.5 | 60.5 |
| 17 | 16 10/16 | 2.4 | 3.5 | 4.6 | 8.7 | 52 | - | - | - | - | - | 87 | - | - | - | - | - | 122 | - | - | - | - | - |
| 18 | - | - | - | - | - | 53 | 52 1/16 | 7.7 | 12.3 | 15.1 | 27.4 | 88 | 87 8/16 | 13.4 | 21.3 | 25.7 | 45.0 | 123 | 122 15/16 | 18.3 | 29.0 | 36.0 | 62.1 |
| 19 | 18 9/16 | 2.7 | 3.9 | 5.2 | 10.2 | 54 | - | - | - | - | - | 89 | - | - | - | - | - | 124 | - | - | - | - | - |
| 20 | - | - | - | - | - | 55 | 54 | 8.0 | 12.9 | 15.7 | 28.5 | 90 | 89 7/16 | 13.7 | 21.7 | 26.3 | 46.0 | 125 | 124 14/16 | 18.4 | 29.5 | 36.6 | 63.8 |
| 21 | 20 9/16 | 3.0 | 4.4 | 5.8 | 11.7 | 56 | 56 | 8.4 | 13.5 | 16.4 | 29.5 | 91 | - | - | - | - | - | 126 | - | - | - | - | - |
| 22 | - | - | - | - | - | 57 | - | - | - | - | - | 92 | 91 7/16 | 14.0 | 22.1 | 26.9 | 47.0 | 127 | 126 14/16 | 18.6 | 29.9 | 37.2 | 65.4 |
| 23 | 22 8/16 | 3.4 | 4.9 | 6.4 | 13.2 | 58 | 57 15/16 | 8.7 | 14.0 | 17.0 | 30.6 | 93 | - | - | - | - | - | 128 | - | - | - | - | - |
| 24 | - | - | - | - | - | 59 | - | - | - | - | - | 94 | 93 6/16 | 14.3 | 22.6 | 27.5 | 47.9 | 129 | 128 13/16 | 18.8 | 30.4 | 37.7 | 67.0 |
| 25 | 24 8/16 | 3.7 | 5.4 | 7.0 | 14.7 | 60 | 59 15/16 | 9.0 | 14.6 | 17.6 | 31.6 | 95 | - | - | - | - | - | 130 | - | - | - | - | - |
| 26 | - | - | - | - | - | 61 | - | - | - | - | - | 96 | 95 6/16 | 14.4 | 22.8 | 27.8 | 48.4 | 131 | 130 13/16 | 18.9 | 30.8 | 38.3 | 68.6 |
| 27 | 26 7/16 | 4.1 | 5.9 | 7.5 | 15.8 | 62 | 61 14/16 | 9.4 | 15.2 | 18.2 | 32.6 | 97 | - | - | - | - | - | 132 | - | - | - | - | - |
| 28 | - | - | - | - | - | 63 | - | - | - | - | - | 98 | 97 5/16 | 14.7 | 23.3 | 28.5 | 49.4 | 133 | 132 12/16 | 19.1 | 31.2 | 38.9 | 70.2 |
| 29 | 28 7/16 | 4.4 | 6.4 | 8.1 | 16.8 | 64 | 63 14/16 | 9.7 | 15.6 | 18.7 | 33.7 | 99 | - | - | - | - | - | 134 | - | - | - | - | - |
| 30 | - | - | - | - | - | 65 | - | - | - | - | - | 100 | 99 5/16 | 15.0 | 23.7 | 29.0 | 50.4 | 135 | 134 12/16 | 19.3 | 31.8 | 39.4 | 70.7 |
| 31 | 30 6/16 | 4.8 | 6.9 | 8.7 | 17.9 | 66 | 65 13/16 | 10.0 | 16.1 | 19.2 | 34.7 | 101 | - | - | - | - | - | 136 | - | - | - | - | - |
| 32 | - | - | - | - | - | 67 | - | - | - | - | - | 102 | 101 4/16 | 15.3 | 24.1 | 29.6 | 51.3 | 137 | 136 11/16 | 19.5 | 32.3 | 40.0 | 71.2 |
| 33 | 32 6/16 | 5.0 | 7.2 | 9.0 | 18.5 | 68 | 67 13/16 | 10.4 | 16.5 | 19.8 | 35.7 | 103 | - | - | - | - | - | 138 | - | - | - | - | - |
| 34 | - | - | - | - | - | 69 | - | - | - | - | - | 104 | 103 4/16 | 15.6 | 24.6 | 30.2 | 52.3 | 139 | 138 11/16 | 19.8 | 32.8 | 40.6 | 71.8 |
| 35 | 34 5/16 | 5.4 | 7.7 | 9.6 | 19.5 | 70 | 69 12/16 | 10.7 | 17.0 | 20.3 | 36.7 | 105 | - | - | - | - | - | 140 | - | - | - | - | - |
| 36 | - | - | - | - | - | 71 | - | - | - | - | - | 106 | 105 3/16 | 15.8 | 25.0 | 30.7 | 53.2 | 141 | 140 10/16 | 20.0 | 33.3 | 41.1 | 72.3 |
| 37 | 36 5/16 | 5.7 | 8.2 | 10.2 | 20.6 | 72 | 71 12/16 | 11.0 | 17.4 | 20.8 | 37.7 | 107 | - | - | - | - | - | 142 | - | - | - | - | - |
| 38 | - | - | - | - | - | 73 | - | - | - | - | - | 108 | 107 3/16 | 16.1 | 25.5 | 31.3 | 54.2 | 143 | 142 10/16 | 20.2 | 33.9 | 41.7 | 72.8 |
| 39 | 38 4/16 | 6.0 | 8.7 | 10.8 | 21.5 | 74 | 73 11/16 | 11.3 | 17.9 | 21.4 | 38.7 | 109 | - | - | - | - | - | 144 | - | - | - | - | - |
| 40 | - | - | - | - | - | 75 | - | - | - | - | - | 110 | 109 2/16 | 16.4 | 25.9 | 31.9 | 55.2 | | | | | | |
| 41 | 40 4/16 | 6.2 | 9.2 | 11.4 | 22.3 | 76 | 75 11/16 | 11.6 | 18.4 | 22.0 | 39.6 | 111 | - | - | - | - | - | | | | | | |
| 42 | - | - | - | - | - | 77 | - | - | - | - | - | 112 | 111 2/16 | 16.7 | 26.4 | 32.5 | 56.1 | | | | | | |
| 43 | 42 3/16 | 6.4 | 9.7 | 12.0 | 23.1 | 78 | 77 10/16 | 11.9 | 18.9 | 22.7 | 40.5 | 113 | - | - | - | - | - | | | | | | |
| 44 | - | - | - | - | - | 79 | - | - | - | - | - | 114 | 113 1/16 | 17.0 | 26.8 | 33.1 | 57.0 | | | | | | |
| 45 | 44 3/16 | 6.7 | 10.2 | 12.6 | 23.9 | 80 | 79 10/16 | 12.2 | 19.4 | 23.3 | 41.4 | 115 | - | - | - | - | - | | | | | | |
| 46 | - | - | - | - | - | 81 | - | - | - | - | - | 116 | 115 1/16 | 17.3 | 27.3 | 33.7 | 57.9 | | | | | | |

Power Consumption

Tested at Full Power with PDC Series power supplies.

Standard Nominal Lengths offered provide minimal shadowing. For alternate lengths, please contact factory with specific request.

High Efficacy (HE64)

| Nominal Length (in) | Back, Side, and End Feed Actual Length | Watts | | Nominal Length (in) | Back, Side, and End Feed Actual Length | Watts | | Nominal Length (in) | Back, Side, and End Feed Actual Length | Watts | | Nominal Length (in) | Back, Side, and End Feed Actual Length | Watts | |
|---------------------|--|-------|------|---------------------|--|-------|------|---------------------|--|-------|------|---------------------|--|-------|------|
| | | VHO | XHO | | | VHO | XHO | | | VHO | XHO | | | VHO | XHO |
| 12 | 11 8/16 | 7.6 | 9.7 | 47 | 46 5/16 | 28.2 | 35.9 | 82 | 81 2/16 | 50.4 | 62.6 | 117 | – | – | – |
| 13 | 13 | 7.6 | 9.7 | 48 | 47 13/16 | 29.5 | 37.6 | 83 | 82 10/16 | 51.7 | 63.4 | 118 | 117 8/16 | 72.8 | 80.7 |
| 14 | – | – | – | 49 | – | – | – | 84 | – | – | – | 119 | 119 | 73.3 | 81.0 |
| 15 | 14 8/16 | 8.9 | 11.3 | 50 | 49 5/16 | 30.1 | 38.4 | 85 | 84 3/16 | 52.3 | 63.8 | 120 | – | – | – |
| 16 | – | – | – | 51 | 50 14/16 | 31.4 | 40.2 | 86 | 85 11/16 | 53.6 | 64.7 | 121 | 120 8/16 | 74.4 | 81.7 |
| 17 | 16 | 9.5 | 12.1 | 52 | – | – | – | 87 | – | – | – | 122 | – | – | – |
| 18 | 17 9/16 | 10.7 | 13.6 | 53 | 52 6/16 | 32.0 | 41.1 | 88 | 87 3/16 | 54.2 | 65.3 | 123 | 122 | 74.8 | 82.0 |
| 19 | – | – | – | 54 | 53 14/16 | 33.3 | 42.9 | 89 | 88 11/16 | 55.5 | 66.3 | 124 | 123 8/16 | 75.6 | 82.5 |
| 20 | 19 1/16 | 11.4 | 14.4 | 55 | – | – | – | 90 | – | – | – | 125 | – | – | – |
| 21 | 20 9/16 | 12.6 | 16.0 | 56 | 55 6/16 | 34.0 | 43.8 | 91 | 90 3/16 | 56.2 | 66.8 | 126 | 125 1/16 | 76.0 | 82.8 |
| 22 | – | – | – | 57 | 56 14/16 | 35.2 | 45.5 | 92 | 91 12/16 | 57.5 | 67.9 | 127 | 126 9/16 | 76.8 | 83.4 |
| 23 | 22 1/16 | 13.2 | 16.8 | 58 | – | – | – | 93 | – | – | – | 128 | – | – | – |
| 24 | 23 9/16 | 14.5 | 18.3 | 59 | 58 7/16 | 36.5 | 47.3 | 94 | 93 4/16 | 58.2 | 68.4 | 129 | 128 1/16 | 77.2 | 83.6 |
| 25 | – | – | – | 60 | 59 15/16 | 37.2 | 48.2 | 95 | 94 12/16 | 59.5 | 69.5 | 130 | 129 9/16 | 78.0 | 84.2 |
| 26 | 25 2/16 | 15.1 | 19.1 | 61 | – | – | – | 96 | – | – | – | 131 | – | – | – |
| 27 | 26 10/16 | 16.4 | 20.7 | 62 | 61 7/16 | 38.4 | 50.0 | 97 | 96 4/16 | 60.1 | 70.0 | 132 | 131 2/16 | 78.4 | 84.5 |
| 28 | – | – | – | 63 | 62 15/16 | 39.1 | 50.8 | 98 | 97 13/16 | 61.4 | 71.1 | 133 | 132 10/16 | 79.2 | 85.0 |
| 29 | 28 2/16 | 17.0 | 21.4 | 64 | – | – | – | 99 | – | – | – | 134 | – | – | – |
| 30 | 29 10/16 | 18.2 | 23.0 | 65 | 64 8/16 | 40.4 | 52.5 | 100 | 99 5/16 | 62.0 | 71.7 | 135 | 134 2/16 | 79.6 | 85.4 |
| 31 | – | – | – | 66 | 66 | 41.0 | 53.4 | 101 | 100 13/16 | 63.2 | 72.9 | 136 | 135 10/16 | 80.3 | 86.2 |
| 32 | 31 3/16 | 18.9 | 23.8 | 67 | – | – | – | 102 | – | – | – | 137 | – | – | – |
| 33 | 32 11/16 | 20.1 | 25.3 | 68 | 67 8/16 | 42.3 | 55.1 | 103 | 102 5/16 | 63.8 | 73.5 | 138 | 137 2/16 | 80.6 | 86.6 |
| 34 | – | – | – | 69 | – | – | – | 104 | 103 13/16 | 65.0 | 74.7 | 139 | 138 11/16 | 81.3 | 87.5 |
| 35 | 34 3/16 | 20.7 | 26.1 | 70 | 69 | 42.9 | 55.9 | 105 | – | – | – | 140 | – | – | – |
| 36 | 35 11/16 | 22.0 | 27.6 | 71 | 70 8/16 | 44.2 | 57.6 | 106 | 105 6/16 | 65.6 | 75.3 | 141 | 140 3/16 | 81.7 | 87.9 |
| 37 | – | – | – | 72 | – | – | – | 107 | 106 14/16 | 66.8 | 76.5 | 142 | 141 11/16 | 82.4 | 88.7 |
| 38 | 37 3/16 | 22.6 | 28.4 | 73 | 72 1/16 | 44.9 | 58.5 | 108 | – | – | – | 143 | – | – | – |
| 39 | 38 12/16 | 23.9 | 30.1 | 74 | 73 9/16 | 46.1 | 59.7 | 109 | 108 6/16 | 67.4 | 77.1 | 144 | 143 3/16 | 82.7 | 89.1 |
| 40 | – | – | – | 75 | – | – | – | 110 | 109 14/16 | 68.5 | 78.0 | | | | |
| 41 | 40 4/16 | 24.5 | 30.9 | 76 | 75 1/16 | 46.7 | 60.1 | 111 | – | – | – | | | | |
| 42 | 41 12/16 | 25.7 | 32.6 | 77 | 76 9/16 | 48.0 | 60.9 | 112 | 111 7/16 | 69.6 | 78.7 | | | | |
| 43 | – | – | – | 78 | – | – | – | 113 | 112 15/16 | 70.1 | 79.0 | | | | |
| 44 | 43 4/16 | 26.4 | 33.4 | 79 | 78 2/16 | 48.6 | 61.3 | 114 | – | – | – | | | | |
| 45 | 44 13/16 | 27.6 | 35.1 | 80 | 79 10/16 | 49.8 | 62.2 | 115 | 114 7/16 | 71.2 | 79.7 | | | | |
| 46 | – | – | – | 81 | – | – | – | 116 | 115 15/16 | 71.7 | 80.0 | | | | |

Voltage Drop Calculator

The below chart assumes nominal voltage of 24 Volts and a Voltage Drop Allowance of 3% through the wire

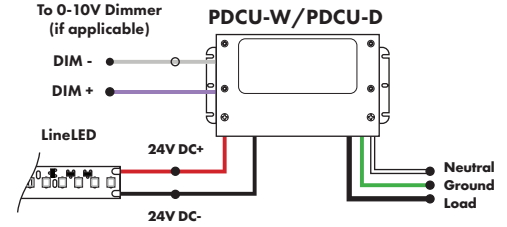
| Wattage [W] | Wire Length From Power Supply to Start of Run [ft] | | | | | | |
|-------------|--|--------|--------|--------|--------|--------|--------|
| | 12 AWG | 14 AWG | 16 AWG | 18 AWG | 20 AWG | 22 AWG | 24 AWG |
| 5 | 1088.2 | 684.4 | 430.3 | 270.6 | 170.2 | 107.1 | 67.3 |
| 10 | 544.1 | 342.2 | 215.1 | 135.3 | 85.1 | 53.5 | 33.7 |
| 15 | 362.7 | 228.1 | 143.4 | 90.2 | 56.7 | 35.7 | 22.4 |
| 20 | 272.0 | 171.1 | 107.6 | 67.7 | 42.6 | 26.8 | 16.8 |
| 25 | 217.6 | 136.9 | 86.1 | 54.1 | 34.0 | 21.4 | 13.5 |
| 30 | 181.4 | 114.1 | 71.7 | 45.1 | 28.4 | 17.8 | 11.2 |
| 35 | 155.5 | 97.8 | 61.5 | 38.7 | 24.3 | 15.3 | 9.6 |
| 40 | 136.0 | 85.5 | 53.8 | 33.8 | 21.3 | 13.4 | 8.4 |
| 45 | 120.9 | 76.0 | 47.8 | 30.1 | 18.9 | 11.9 | 7.5 |
| 50 | 108.8 | 68.4 | 43.0 | 27.1 | 17.0 | 10.7 | 6.7 |
| 55 | 98.9 | 62.2 | 39.1 | 24.6 | 15.5 | 9.7 | 6.1 |
| 60 | 90.7 | 57.0 | 35.9 | 22.6 | 14.2 | 8.9 | 5.6 |
| 65 | 83.7 | 52.6 | 33.1 | 20.8 | 13.1 | 8.2 | 5.2 |
| 70 | 77.7 | 48.9 | 30.7 | 19.3 | 12.2 | 7.6 | 4.8 |
| 75 | 72.5 | 45.6 | 28.7 | 18.0 | 11.3 | 7.1 | 4.5 |
| 80 | 68.0 | 42.8 | 26.9 | 16.9 | 10.6 | 6.7 | 4.2 |
| 85 | 64.0 | 40.3 | 25.3 | 15.9 | 10.0 | 6.3 | 4.0 |
| 90 | 60.5 | 38.0 | 23.9 | 15.0 | 9.5 | 5.9 | 3.7 |
| 96 | 56.7 | 35.6 | 22.4 | 14.1 | 8.9 | 5.6 | 3.5 |

Power Supplies

See Power Supply instructions and spec sheet for wiring information. For a complete list of compatible dimmers, see Compatible Dimming Chart on the Resources page.

Universal Power Supply 1% 120VAC - 277VAC

| MODEL | POWER | OUTPUT |
|--------------------------|--|-------------|
| PDCU-D - IP20 Dry Series | 30 - 30 W 60 - 60 W 96 - 96 W 3X96 - 3X96 W | 24 - 24 VDC |
| PDCU-W - IP66 Wet Series | 96 - 96 W 3X96 - 3X96 W | |

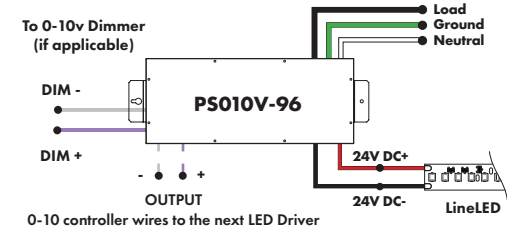


0-10V dims down to 1%, MLV/ELV/TRIAC dims down to 1%.
For a complete list of compatible dimmers, see [Compatible Dimming Chart](#) on the Resources page.

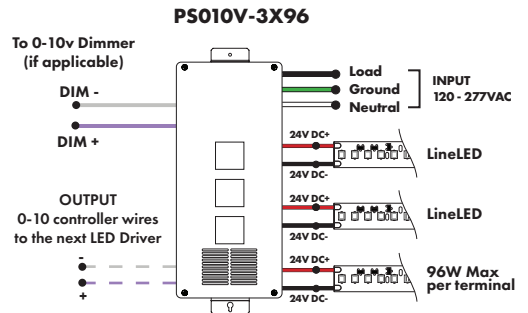
| MODELS | PDCU-W 96W | PDCU-W 3X96W | PDCU-D 30W | PDCU-D 60W | PDCU-D 96W | PDCU-D 3X96W |
|---------------|------------|--------------|------------|------------|------------|--------------|
| Length | 8.66" | 11.85" | 6.10" | 7.93" | 8.25" | 9.57" |
| Width | 3.73" | 4.32" | 3.35" | 3.35" | 4.10" | 5.94" |
| Depth | 1.61" | 1.81" | 1.33" | 1.32" | 1.56" | 1.13" |

0-10V Dimming Power Supplies 0.1% 120VAC - 277VAC

| MODEL | POWER | OUTPUT | DIMMING |
|--|------------------------------------|-------------|-----------------------------------|
| PS010V - 0-10V Power Supply dims down to 0.1% | 96 - 96 Watt 3X96 - 3 X 96 Watt | 24 - 24 VDC | LIN - Linear LOG - Logarithmic |



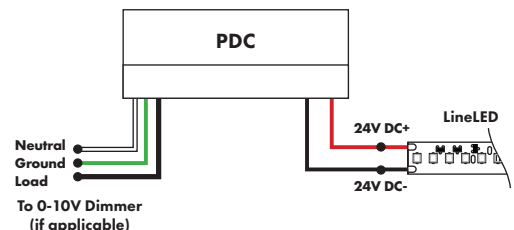
| MODELS | 96W | 3X96 |
|---------------|--------|--------|
| Length | 14.40" | 15.75" |
| Width | 5.20" | 6.62" |
| Depth | 2.60" | 4.95" |



Triac, MLV, & ELV Compatible Dimmers

| MODEL | POWER | OUTPUT |
|---------------------------|---------------|-------------|
| PDC - (IP20) Power Supply | 96 - 96 Watts | 24 - 24 VDC |

| MODELS | 96W |
|---------------|-------|
| Length | 8.25" |
| Width | 4.10" |
| Depth | 1.56" |



Power Supplies

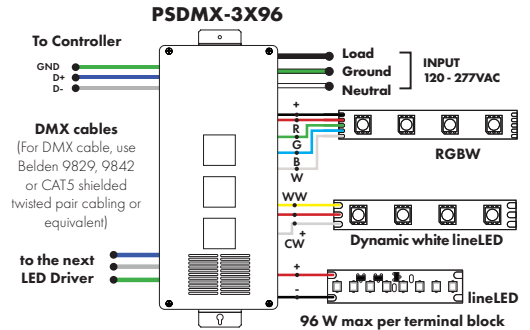
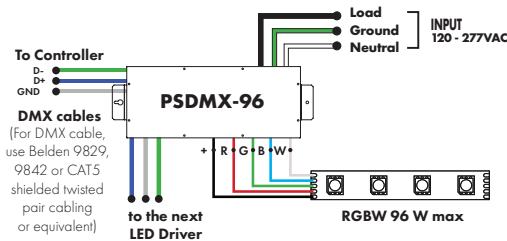
See Power Supply instructions and spec sheet for wiring information. For a complete list of compatible dimmers, see Compatible Dimming Chart on the Resources page.

DMX Dimming Power Supplies 120VAC - 277VAC

| MODEL | POWER | OUTPUT |
|---|------------------------------------|-------------|
| PSDMX - DMX Power Supply dims down to 0% | 96 - 96 Watt 3X96 - 3 X 96 Watt | 24 - 24 VDC |

Features eldoLED's LINEARdrive configurable dimmable drivers

| MODELS | 96W | 3X96 |
|---------------|--------|--------|
| Length | 14.40" | 15.75" |
| Width | 5.20" | 6.62" |
| Depth | 2.60" | 4.95" |

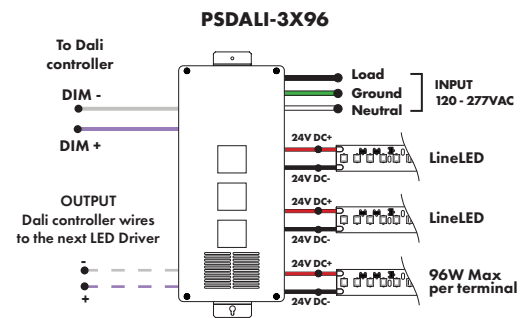
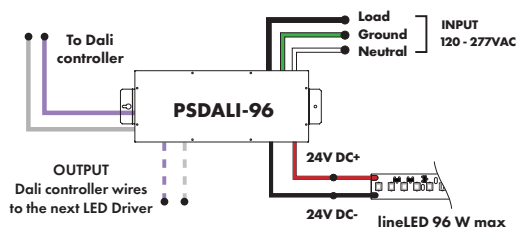


DALI 0% Dimming Power Supplies 120VAC - 277VAC

| MODEL | POWER | OUTPUT |
|---|------------------------------------|-------------|
| PSDALI - DALI Power Supply dims down to 0% | 96 - 96 Watt 3X96 - 3 X 96 Watt | 24 - 24 VDC |

Features eldoLED's LINEARdrive configurable dimmable drivers

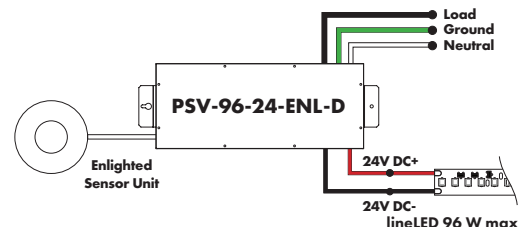
| Model | 96W | 3X96 |
|---------------|--------|--------|
| Length | 14.40" | 15.75" |
| Width | 5.20" | 6.62" |
| Depth | 2.60" | 4.95" |



Enlighted Enabled Dimming Power Supplies 120VAC - 277VAC

| MODEL | POWER | OUTPUT | DIMMING | LOCATION |
|------------------|--------------|-------------|--|----------|
| PSV - PSV Series | 96 - 96 Watt | 24 - 24 VDC | ENL - Enlighted Dimming dims down to 0% | D - Damp |

| | |
|---------------|------------|
| Model | 96W |
| Length | 14.40" |
| Width | 5.20" |
| Depth | 2.60" |



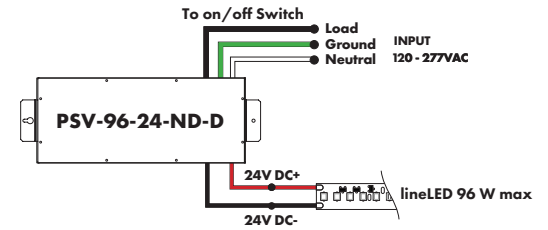
Power Supplies

See Power Supply instructions and spec sheet for wiring information. For a complete list of compatible dimmers, see Compatible Dimming Chart on the Resources page.

Non-Dimming Power Supply 120VAC - 277VAC

| MODEL | POWER | OUTPUT | DIMMING | LOCATION |
|------------------|--------------|-------------|------------------|----------|
| PSV - PSV Series | 96 - 96 Watt | 24 - 24 VDC | ND - Non Dimming | D - Damp |

| MODELS | 96W |
|--------|--------|
| Length | 14.40" |
| Width | 5.20" |
| Depth | 2.60" |



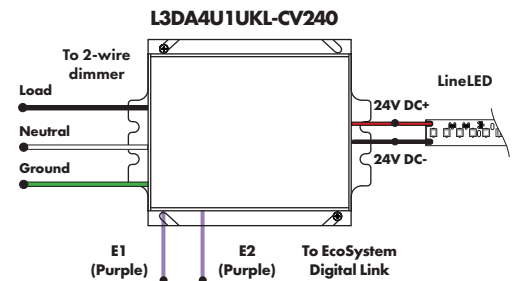
Luminii is a Lutron OEM Advantage Partner

Lutron Power Supplies 1%

| MODEL |
|------------------|
| L3DA4U1UKL-CV240 |

HiLume™ 1% EcoSystem Voltage LED driver
40W max

| MODELS | L3DA4U1UKL-CV240 |
|--------|------------------|
| Length | 4.98" |
| Width | 4.00" |
| Depth | 2.62" |



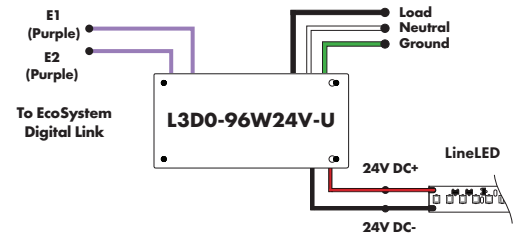
Luminii is a Lutron OEM Advantage Partner

Lutron Power Supplies 0.1%

| MODEL |
|---------------|
| L3D0-96W24V-U |

HiLume™ 0.1% EcoSystem Voltage LED Driver with Soft-On, Fade-to-Black™
96W max

| MODELS | L3D0 |
|--------|--------|
| Length | 10.50" |
| Width | 5.50" |
| Depth | 2.00" |



In-Ground Power Supplies

| MODEL | POWER | OUTPUT | INPUT |
|---|--------------------|-------------|----------------------------------|
| IG - In ground CVE Series CVE - ELV Dimming DALI - eidoLED Dali dimming Both dims down to 0% | 96X2 - 2 X 96 Watt | 24 - 24 VDC | Blank - 120 V 277 - 240/277 V |

| MODELS | Dual Circuit |
|--------|--------------|
| Length | 8.40" |
| Width | 8.30" |
| Depth | 8.10" |

