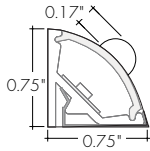


Features

- 24VDC Class 2 fixtures made to order up to 144". Fixtures can be linked up to 48' depending on output
- Suitable for undercabinet, millwork, closet/ storage space, cove, curtain pocket, toe kick, architectural reveals, banister/ handrail, accent lighting, and surface mount applications
- Approved for closet/storage space installation per NEC 410.16(A)(3) and 410.16(C)(5)
- Class 2 listed for damp locations
- Dot free even illumination with frosted lens
- High Color Quality options offer premium quality and vibrant colors with R9 values up to 97
- High Efficacy options offer best in class output and efficacy with over 600 lm/ft and up to 85 lm/W
- Proprietary strong bond solder method handles up to 50 lbs of pull force on wire leads and connectors
- 5 Year warranty



Finish Options (see page 2 for additional information)

- | | | |
|---|---|---|
|  Silver Anodized |  White |  Aged Brass |
|  Black |  Matte Black |  Polished Gold |
|  Bronze |  Warm Nickel |  Chrome |



Technical Information

MODEL	High Color Quality			High Efficacy				High Efficacy
	72SO	72HO	72VHO	HE48LO	HE48SO	HE48MO	HE48HO	HE64VHO
OUTPUT OPTIONS								
Lumens Output (3000K) <small>(with a Frosted Lens)</small>	165 lm/ft	268 lm/ft	325 lm/ft	161 lm/ft	222 lm/ft	297 lm/ft	476 lm/ft	603 lm/ft
Average Power Consumption <small>(for a 4" section)</small>	2.8 W/ft	4.8 W/ft	6 W/ft	1.9 W/ft	2.8 W/ft	3.5 W/ft	6.5 W/ft	7.5 W/ft
Efficacy	59 lm/W	56 lm/W	54 lm/W	85 lm/W	79 lm/W	85 lm/W	73 lm/W	80 lm/W
Max Run Length <small>(in series)</small>	40 ft	31 ft	22 ft	48 ft	42 ft	33 ft	21 ft	15 ft
Max Ambient Temperature*	50°C [122°F]			50°C [122°F]				50°C [122°F]

*Max Ambient Temperature to maintain L70 of 50k+ hours. Exceeding Max Ambient Temperature may result in decreased life/output. Consult Technical Support for specific inquiries.

High Color Quality (72)

CCT	Multiplier <small>(reference - 3000K)</small>	TM-30			
		CRI	R _f	R _g	R ₉
1900K	0.55	96	94	97	90
2200K	0.70	96	95	101	89
2400K	0.72	98	97	101	91
2700K	0.74	97	96	101	91
3000K	1.00	97	95	104	97
3500K	1.02	97	94	105	97
4100K	1.07	97	90	99	97

High Efficacy (HE48/HE64)

CCT	Multiplier <small>(reference - 3000K)</small>	TM-30			
		CRI	R _f	R _g	R ₉
2200K	0.73	92	91	97	42
2500K	0.81	93	96	96	62
2700K	0.94	92	90	99	58
3000K	1.00	92	89	99	57
3500K	1.02	92	89	99	60
4000K	1.02	92	86	94	71

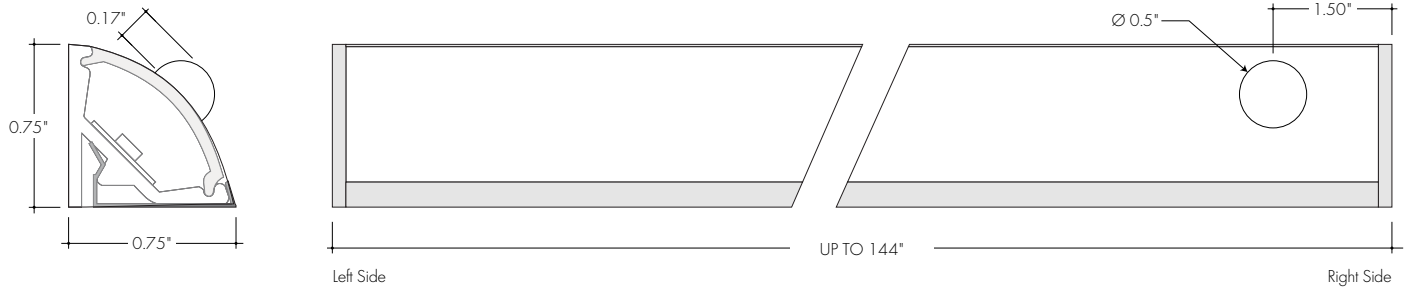
Ordering Code

MODEL	LENGTH ¹	OUTPUT	CCT	LENS ²	MOUNTING	FINISH ³	POSITION TYPE / SENSOR LOCATION	POWER FEED	SENSORS
K45M-Kendo 45M with Sensor	12" - 144" 1" increments	72SO-Standard	19K-1900K 22K-2200K 24K-2400K	RF-Round Frosted	CB-Concealed Bracket	SA-Silver Anodized BK-Black BZ-Bronze WH-White MBK-Matte Black WN-Warm Nickel AB-Aged Brass PG-Polished Gold ⁴ CH-Chrome ⁴	LE-Left End Feed	1-72" wire leads 1X2-72" wire leads at both ends 2-72" wire leads at one end and Quick Connect at other	MN010-PIR Integral Motion Sensor; 10 seconds delay MN020-PIR Integral Motion Sensor; 20 seconds delay MN030-PIR Integral Motion Sensor; 30 seconds delay MN045-PIR Integral Motion Sensor; 45 seconds delay MN090-PIR Integral Motion Sensor; 90 seconds delay MN0120-PIR Integral Motion Sensor; 120 seconds delay
		72HO-High	27K-2700K 30K-3000K 35K-3500K 41K-4100K				RE-Right End Feed		
	12" - 144" 2" increments	72VHO-Very High	22K-2200K 25K-2500K 27K-2700K				LB-Left Side Back Feed	3-Single Quick Connect 4-Quick Connect at both ends	
		HE48LO-Low	30K-3000K 35K-3500K 40K-4000K				RB-Right Side Back Feed		

1 - Custom lengths and increments are available, please consult Inside Sales with specific request.
2 - All High Efficacy options can be used to comply with Title 24 JAB. High Color Quality options can be used to comply with Title 24 JAB depending on Output, CCT, and lens selections. See multiplier charts to calculate specific efficacies.

3 - Non SA finishes may have extended lead times. Custom RALs are available, please consult Inside Sales with specific request.
4 - Polished Gold finishes have a maximum fixture length of 48", and Chrome finishes have a maximum fixture length of 72".

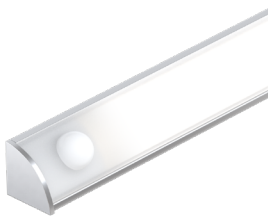
Product Dimensions



Finish Options

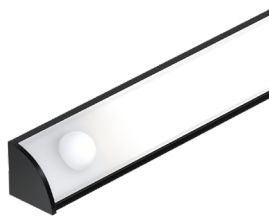
- Finish options are available in a wide variety, allowing for complete customization of style and aesthetic.
- Non Silver Anodized finishes may have extended lead times.
- Polished Gold finishes have a maximum fixture length of 48", and Chrome finishes have a maximum fixture length of 72".
- Custom RALs are available, please consult Inside Sales with specific request.

Silver Anodized



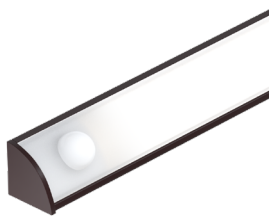
Silver Anodized is a soft silver with a clear finish.

Black



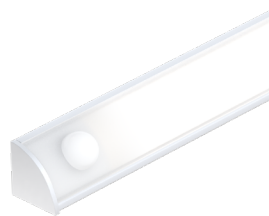
Black is a true deep black with a glossy finish.

Bronze



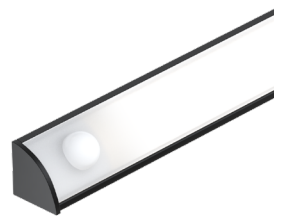
Bronze is a rich, dark brown with a satin finish.

White



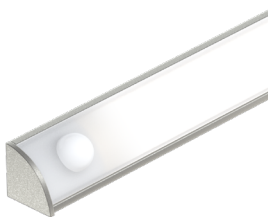
White is a polar bright white and field paintable.

Matte Black



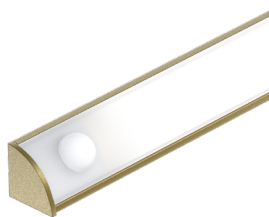
Matte Black is a dark, pitch-black with a soft flat finish.

Warm Nickel



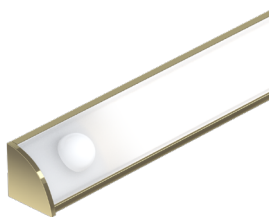
Warm Nickel is a soft, silvery smoke with warm tones and a satin finish.

Aged Brass



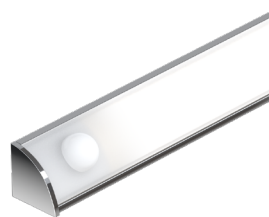
Aged Brass is a deep brown shade with slightly golden undertones.

Polished Gold



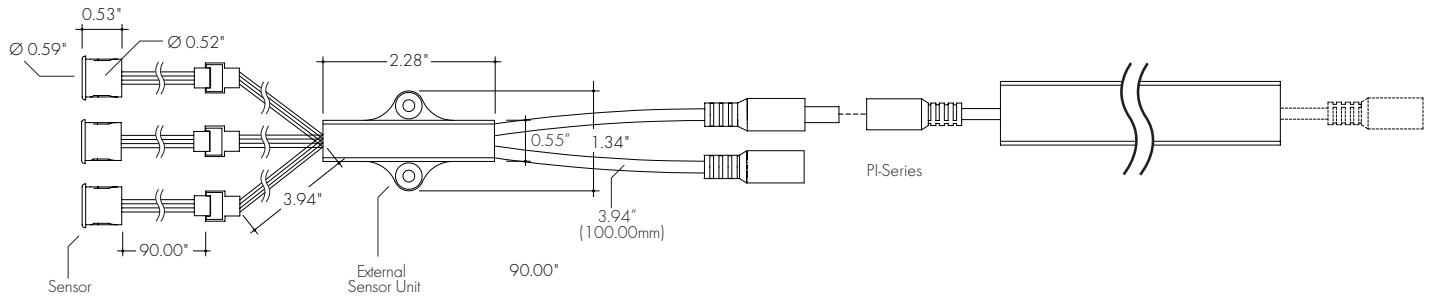
Polished Gold is bright and radiant for a brilliant finish.

Chrome

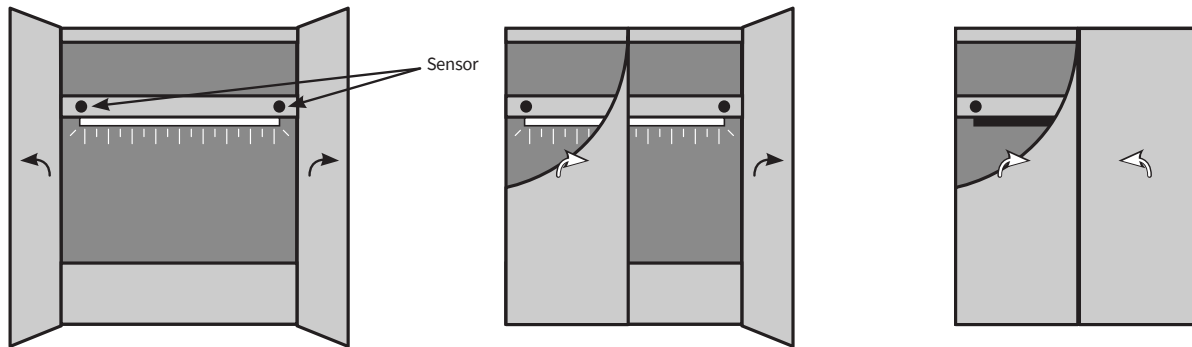


Chrome is a highly reflective silver polish.

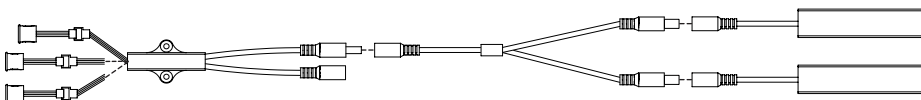
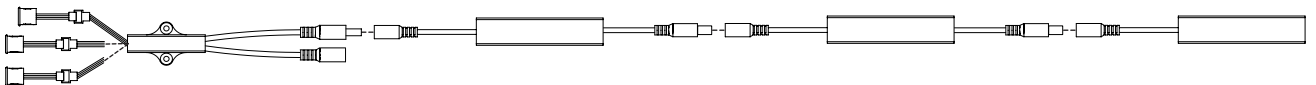
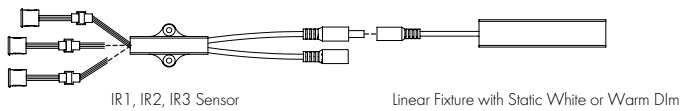
Dimensions (Near IR Remote Sensor)



Functionality (External Door Sensor)



Wiring Diagrams (Near IR Remote Door Sensor)



Light Transmission and Dotting

Output Options	Lens/Accessory
	Round Frosted
72SO	ND
72HO	ND
72VHO	ND
HE48LO	ND
HE48SO	ND
HE48MO	ND
HE48HO	ND
HE64VHO	ND
Transmission Percentage	100%



CD SD ND
CD - Clear Dotting
SD - Slight Dotting
ND - No Dotting

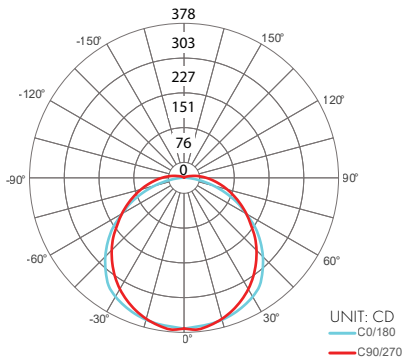
Photometry

K45M-48-30K-72VHO-RF
 Kendo M, 4ft, 3000K, VHO, Round Frosted Lens

Zonal Lumen Summary 3000K

Zone	Lumen	% Fixture
0-30	298	22.9%
0-40	496	38.1%
0-60	907	69.7%
0-90	1243	95.4%
0-180	1302	100%

Total



Power Consumption

Tested at Full Power with PDC Series power supplies.

*For Back Feed add 4/16" (1/4") to Actual Length. Standard Nominal Lengths offered provide minimal shadowing. For alternate lengths, please consult Inside Sales with specific request.

High Color Quality (72)

Nominal Length (in)	Side and End Feed Actual Length	Watts			Nominal Length (in)	Side and End Feed Actual Length	Watts			Nominal Length (in)	Side and End Feed Actual Length	Watts			Nominal Length (in)	Side and End Feed Actual Length	Watts		
		SO	HO	VHO			SO	HO	VHO			SO	HO	VHO			SO	HO	VHO
12	11 14/16	2.7	4.4	6.2	47	46 10/16	10.0	16.7	22.1	82	81 5/16	17.9	28.9	37.6	117	116 1/16	25.2	39.9	51.2
13	-	-	-	-	48	47 12/16	10.2	17.1	22.6	83	82 8/16	18.1	29.2	38.0	118	117 4/16	25.6	40.5	52.0
14	13	2.7	4.4	6.2	49	48 15/16	10.5	17.4	23.1	84	83 10/16	18.3	29.5	38.4	119	118 6/16	25.9	40.8	52.4
15	14 3/16	2.7	4.4	6.2	50	-	-	-	-	85	84 13/16	18.5	29.8	38.8	120	119 9/16	26.1	41.1	52.8
16	15 5/16	2.9	4.8	6.7	51	50 1/16	10.7	17.8	23.5	86	85 15/16	18.7	30.1	39.2	121	120 11/16	26.3	41.4	53.2
17	16 8/16	3.1	5.2	7.3	52	51 4/16	11.1	18.6	24.4	87	-	-	-	-	122	121 14/16	26.5	41.7	53.6
18	17 10/16	3.4	5.6	7.8	53	52 6/16	11.4	18.9	24.9	88	87 2/16	19.2	30.8	40.0	123	-	-	-	-
19	18 13/16	3.6	6.0	8.3	54	53 9/16	11.6	19.3	25.3	89	88 5/16	19.4	31.1	40.4	124	123	26.7	42.0	54.0
20	19 15/16	3.9	6.5	8.9	55	54 11/16	11.9	19.7	25.7	90	89 7/16	19.6	31.5	40.8	125	124 3/16	27.1	42.6	54.7
21	-	-	-	-	56	55 14/16	12.1	20.1	26.1	91	90 10/16	19.9	31.8	41.1	126	125 5/16	27.3	42.9	55.0
22	21 2/16	4.4	7.3	9.9	57	-	-	-	-	92	91 12/16	20.1	32.2	41.5	127	126 8/16	27.5	43.1	55.4
23	22 4/16	4.6	7.7	10.5	58	57	12.3	20.5	26.6	93	92 15/16	20.4	32.5	41.9	128	127 10/16	27.7	43.4	55.7
24	23 7/16	4.8	8.1	11.0	59	58 3/16	12.8	21.3	27.4	94	-	-	-	-	129	128 13/16	27.9	43.7	56.1
25	24 10/16	5.1	8.6	11.5	60	59 5/16	13.1	21.6	27.8	95	94 1/16	20.6	32.9	42.3	130	130	28.1	43.9	56.4
26	25 12/16	5.3	9.0	12.1	61	60 8/16	13.3	22.0	28.3	96	95 4/16	21.1	33.6	43.1	131	-	-	-	-
27	26 15/16	5.6	9.4	12.6	62	61 10/16	13.6	22.4	28.7	97	96 6/16	21.3	33.9	43.4	132	131 2/16	28.5	44.5	57.1
28	-	-	-	-	63	62 13/16	13.8	22.8	29.1	98	97 9/16	21.5	34.2	43.8	133	132 5/16	28.7	44.7	57.4
29	28 1/16	5.8	9.8	13.1	64	63 15/16	14.0	23.1	29.6	99	98 11/16	21.8	34.6	44.2	134	133 7/16	28.9	45.0	57.8
30	29 4/16	6.2	10.5	14.1	65	-	-	-	-	100	99 14/16	22.0	34.9	44.6	135	134 10/16	29.1	45.3	58.1
31	30 6/16	6.5	10.9	14.5	66	65 2/16	14.5	23.8	30.5	101	-	-	-	-	136	135 12/16	29.3	45.5	58.4
32	31 9/16	6.7	11.2	15.0	67	66 5/16	14.7	24.1	31.0	102	101	22.2	35.2	45.0	137	136 15/16	29.5	45.7	58.7
33	32 11/16	6.9	11.6	15.5	68	67 7/16	14.9	24.4	31.4	103	102 3/16	22.5	35.9	45.9	138	-	-	-	-
34	33 14/16	7.1	12.0	16.0	69	68 10/16	15.1	24.7	31.9	104	103 5/16	22.7	36.2	46.3	139	138 1/16	29.6	45.9	59.1
35	-	-	-	-	70	69 12/16	15.3	25.0	32.4	105	104 8/16	22.9	36.5	46.7	140	139 4/16	30.0	46.3	59.7
36	35	7.3	12.3	16.5	71	70 15/16	15.5	25.4	32.8	106	105 10/16	23.1	36.8	47.1	141	140 6/16	30.2	46.5	60.0
37	36 3/16	7.8	13.1	17.4	72	-	-	-	-	107	106 13/16	23.3	37.1	47.5	142	141 9/16	30.3	46.8	60.3
38	37 5/16	8.0	13.4	17.9	73	72 1/16	15.8	25.7	33.3	108	108	23.5	37.4	48.0	143	142 11/16	30.5	47.0	60.6
39	38 8/16	8.2	13.8	18.4	74	73 4/16	16.2	26.3	34.2	109	-	-	-	-	144	143 14/16	30.7	47.2	61.0
40	39 10/16	8.4	14.2	18.9	75	74 6/16	16.4	26.6	34.7	110	109 2/16	23.9	38.1	48.8					
41	40 13/16	8.7	14.5	19.3	76	75 9/16	16.6	26.9	35.1	111	110 5/16	24.1	38.4	49.2					
42	41 15/16	8.9	14.9	19.8	77	76 11/16	16.8	27.3	35.5	112	111 7/16	24.3	38.7	49.6					
43	-	-	-	-	78	77 14/16	17.1	27.6	35.9	113	112 10/16	24.5	39.0	50.0					
44	43 2/16	9.3	15.6	20.7	79	-	-	-	-	114	113 12/16	24.8	39.3	50.4					
45	44 5/16	9.6	16.0	21.2	80	79	17.3	27.9	36.3	115	114 15/16	25.0	39.6	50.8					
46	45 7/16	9.8	16.4	21.7	81	80 3/16	17.7	28.5	37.2	116	-	-	-	-					

Power Consumption

Tested at Full Power with PDC Series power supplies.

*For Back Feed add 4/16" (1/4") to Actual Length. Standard Nominal Lengths offered provide minimal shadowing. For alternate lengths, please consult Inside Sales with specific request.

High Efficacy (HE48)

Nominal Length (in)	Side and End Feed Actual Length	Watts				Nominal Length (in)	Side and End Feed Actual Length	Watts				Nominal Length (in)	Side and End Feed Actual Length	Watts				Nominal Length (in)	Side and End Feed Actual Length	Watts			
		LO	SO	MO	HO			LO	SO	MO	HO			LO	SO	MO	HO			LO	SO	MO	HO
12	10 8/16	1.7	2.5	3.5	5.7	47	-	-	-	-	82	81 5/16	12.2	19.4	23.3	41.4	117	116 12/16	17.3	27.3	33.7	57.9	
13	12 7/16	1.7	2.5	3.5	5.7	48	47 14/16	6.9	10.7	13.3	24.7	83	-	-	-	-	118	-	-	-	-		
14	-	-	-	-	-	49	-	-	-	-	84	83 5/16	12.5	19.9	23.9	42.2	119	118 12/16	17.5	27.7	34.3	58.7	
15	14 7/16	1.7	2.5	3.5	5.7	50	49 13/16	7.1	11.2	13.9	25.4	85	-	-	-	-	120	-	-	-	-		
16	-	-	-	-	-	51	-	-	-	-	86	85 4/16	12.8	20.3	24.5	43.1	121	120 11/16	17.8	28.1	34.9	59.6	
17	16 6/16	2.0	3.0	4.0	7.2	52	51 13/16	7.4	11.7	14.5	26.3	87	-	-	-	-	122	-	-	-	-		
18	-	-	-	-	-	53	-	-	-	-	88	87 4/16	13.1	20.8	25.1	44.1	123	122 11/16	18.1	28.6	35.5	60.5	
19	18 6/16	2.4	3.5	4.6	8.7	54	53 12/16	7.7	12.3	15.1	27.4	89	-	-	-	-	124	-	-	-	-		
20	-	-	-	-	-	55	-	-	-	-	90	89 3/16	13.4	21.3	25.7	45.0	125	124 10/16	18.3	29.0	36.0	62.1	
21	20 5/16	2.7	3.9	5.2	10.2	56	55 12/16	8.0	12.9	15.7	28.5	91	-	-	-	-	126	-	-	-	-		
22	-	-	-	-	-	57	-	-	-	-	92	91 3/16	13.7	21.7	26.3	46.0	127	126 10/16	18.4	29.5	36.6	63.8	
23	22 4/16	3.0	4.4	5.8	11.7	58	57 11/16	8.4	13.5	16.4	29.5	93	-	-	-	-	128	-	-	-	-		
24	-	-	-	-	-	59	-	-	-	-	94	93 2/16	14.0	22.1	26.9	47.0	129	128 9/16	18.6	29.9	37.2	65.4	
25	24 4/16	3.4	4.9	6.4	13.2	60	59 11/16	8.7	14.0	17.0	30.6	95	-	-	-	-	130	-	-	-	-		
26	-	-	-	-	-	61	-	-	-	-	96	95 2/16	14.3	22.6	27.5	47.9	131	130 9/16	18.8	30.4	37.7	67.0	
27	26 3/16	3.7	5.4	7.0	14.7	62	61 10/16	9.0	14.6	17.6	31.6	97	-	-	-	-	132	-	-	-	-		
28	-	-	-	-	-	63	-	-	-	-	98	97 1/16	14.4	22.8	27.8	48.4	133	132 8/16	18.9	30.8	38.3	68.6	
29	28 3/16	4.1	5.9	7.5	15.8	64	63 10/16	9.4	15.2	18.2	32.6	99	-	-	-	-	134	-	-	-	-		
30	-	-	-	-	-	65	-	-	-	-	100	99 1/16	14.7	23.3	28.5	49.4	135	134 8/16	19.1	31.2	38.9	70.2	
31	30 2/16	4.4	6.4	8.1	16.8	66	65 9/16	9.7	15.6	18.7	33.7	101	-	-	-	-	136	-	-	-	-		
32	-	-	-	-	-	67	-	-	-	-	102	101	15.0	23.7	29.0	50.4	137	136 7/16	19.3	31.8	39.4	70.7	
33	32 2/16	4.8	6.9	8.7	17.9	68	67 9/16	10.0	16.1	19.2	34.7	103	103	15.3	24.1	29.6	51.3	138	-	-	-	-	
34	-	-	-	-	-	69	-	-	-	-	104	-	-	-	-	139	138 7/16	19.5	32.3	40.0	71.2		
35	34 1/16	5.0	7.2	9.0	18.5	70	69 8/16	10.4	16.5	19.8	35.7	105	104 15/16	15.6	24.6	30.2	52.3	140	-	-	-	-	
36	-	-	-	-	-	71	-	-	-	-	106	-	-	-	-	141	140 6/16	19.8	32.8	40.6	71.8		
37	36 1/16	5.4	7.7	9.6	19.5	72	71 8/16	10.7	17.0	20.3	36.7	107	106 15/16	15.8	25.0	30.7	53.2	142	-	-	-	-	
38	-	-	-	-	-	73	-	-	-	-	108	-	-	-	-	143	142 6/16	20.0	33.3	41.1	72.3		
39	38	5.7	8.2	10.2	20.6	74	73 7/16	11.0	17.4	20.8	37.7	109	108 14/16	16.1	25.5	31.3	54.2	144	-	-	-	-	
40	40	6.0	8.7	10.8	21.5	75	-	-	-	-	110	-	-	-	-	-	-	-	-	-	-	-	
41	-	-	-	-	-	76	75 7/16	11.3	17.9	21.4	38.7	111	110 14/16	16.4	25.9	31.9	55.2	-	-	-	-	-	
42	41 15/16	6.2	9.2	11.4	22.3	77	-	-	-	-	112	-	-	-	-	-	-	-	-	-	-	-	
43	-	-	-	-	-	78	77 6/16	11.6	18.4	22.0	39.6	113	112 13/16	16.7	26.4	32.5	56.1	-	-	-	-	-	
44	43 15/16	6.4	9.7	12.0	23.1	79	-	-	-	-	114	-	-	-	-	-	-	-	-	-	-	-	
45	-	-	-	-	-	80	79 6/16	11.9	18.9	22.7	40.5	115	114 13/16	17.0	26.8	33.1	57.0	-	-	-	-	-	
46	45 14/16	6.7	10.2	12.6	23.9	81	-	-	-	-	116	-	-	-	-	-	-	-	-	-	-	-	

Power Consumption

Tested at Full Power with PDC Series power supplies.

*For Back Feed add 4/16" (1/4") to Actual Length. Standard Nominal Lengths offered provide minimal shadowing. For alternate lengths, please consult Inside Sales with specific request.

High Efficacy (HE64)

Nominal Length (in)	Side and End Feed Actual Length	Watts	Nominal Length (in)	Side and End Feed Actual Length	Watts	Nominal Length (in)	Side and End Feed Actual Length	Watts	Nominal Length (in)	Side and End Feed Actual Length	Watts
		VHO			VHO			VHO			VHO
12	11 11/16	7.6	47	46 8/16	27.6	82	81 5/16	49.8	117	116 3/16	71.2
13	-	-	48	-	-	83	82 14/16	50.4	118	117 11/16	71.7
14	13 3/16	7.6	49	48	28.2	84	-	-	119	-	-
15	14 11/16	7.6	50	49 9/16	29.5	85	84 6/16	51.7	120	119 3/16	72.8
16	-	-	51	-	-	86	85 14/16	52.3	121	120 11/16	73.3
17	16 4/16	8.9	52	51 1/16	30.1	87	-	-	122	-	-
18	17 12/16	9.5	53	52 9/16	31.4	88	87 6/16	53.6	123	122 4/16	74.4
19	-	-	54	-	-	89	88 15/16	54.2	124	123 12/16	74.8
20	19 4/16	10.7	55	54 1/16	32.0	90	-	-	125	-	-
21	20 12/16	11.4	56	55 10/16	33.3	91	90 7/16	55.5	126	125 4/16	75.6
22	-	-	57	-	-	92	91 15/16	56.2	127	126 12/16	76.0
23	22 4/16	12.6	58	57 2/16	34.0	93	-	-	128	-	-
24	23 13/16	13.2	59	58 10/16	35.2	94	93 7/16	57.5	129	128 4/16	76.8
25	-	-	60	-	-	95	94 15/16	58.2	130	129 13/16	77.2
26	25 5/16	14.5	61	60 2/16	36.5	96	-	-	131	-	-
27	26 13/16	15.1	62	61 10/16	37.2	97	96 8/16	59.5	132	131 5/16	78.0
28	-	-	63	-	-	98	98	60.1	133	132 13/16	78.4
29	28 5/16	16.4	64	63 3/16	38.4	99	-	-	134	-	-
30	29 14/16	17.0	65	64 11/16	39.1	100	99 8/16	61.4	135	134 5/16	79.2
31	-	-	66	-	-	101	-	-	136	135 14/16	79.6
32	31 6/16	18.2	67	66 3/16	40.4	102	101	62.0	137	-	-
33	32 14/16	18.9	68	67 11/16	41.0	103	102 9/16	63.2	138	137 6/16	80.3
34	-	-	69	-	-	104	-	-	139	138 14/16	80.6
35	34 6/16	20.1	70	69 4/16	42.3	105	104 1/16	63.8	140	-	-
36	35 15/16	20.7	71	70 12/16	42.9	106	105 9/16	65.0	141	140 6/16	81.3
37	-	-	72	-	-	107	-	-	142	141 14/16	81.7
38	37 7/16	22.0	73	72 4/16	44.2	108	107 1/16	65.6	143	-	-
39	38 15/16	22.6	74	73 12/16	44.9	109	108 9/16	66.8	144	143 7/16	82.4
40	-	-	75	-	-	110	-	-			
41	40 7/16	23.9	76	75 4/16	46.1	111	110 2/16	67.4			
42	41 15/16	24.5	77	76 13/16	46.7	112	111 10/16	68.5			
43	-	-	78	-	-	113	-	-			
44	43 8/16	25.7	79	78 5/16	48.0	114	113 2/16	69.6			
45	45	26.4	80	79 13/16	48.6	115	114 10/16	70.1			
46	-	-	81	-	-	116	-	-			

Voltage Drop Calculator

The below chart assumes nominal voltage of 24 Volts and a Voltage Drop Allowance of 3% through the wire

Wattage [W]	Maximum Wire Length From Power Supply to Start of Run [ft]						
	12 AWG	14 AWG	16 AWG	18 AWG	20 AWG	22 AWG	24 AWG
5	1088.2	684.4	430.3	270.6	170.2	107.1	67.3
10	544.1	342.2	215.1	135.3	85.1	53.5	33.7
15	362.7	228.1	143.4	90.2	56.7	35.7	22.4
20	272.0	171.1	107.6	67.7	42.6	26.8	16.8
25	217.6	136.9	86.1	54.1	34.0	21.4	13.5
30	181.4	114.1	71.7	45.1	28.4	17.8	11.2
35	155.5	97.8	61.5	38.7	24.3	15.3	9.6
40	136.0	85.5	53.8	33.8	21.3	13.4	8.4
45	120.9	76.0	47.8	30.1	18.9	11.9	7.5
50	108.8	68.4	43.0	27.1	17.0	10.7	6.7
55	98.9	62.2	39.1	24.6	15.5	9.7	6.1
60	90.7	57.0	35.9	22.6	14.2	8.9	5.6
65	83.7	52.6	33.1	20.8	13.1	8.2	5.2
70	77.7	48.9	30.7	19.3	12.2	7.6	4.8
75	72.5	45.6	28.7	18.0	11.3	7.1	4.5
80	68.0	42.8	26.9	16.9	10.6	6.7	4.2
85	64.0	40.3	25.3	15.9	10.0	6.3	4.0
90	60.5	38.0	23.9	15.0	9.5	5.9	3.7
96	56.7	35.6	22.4	14.1	8.9	5.6	3.5

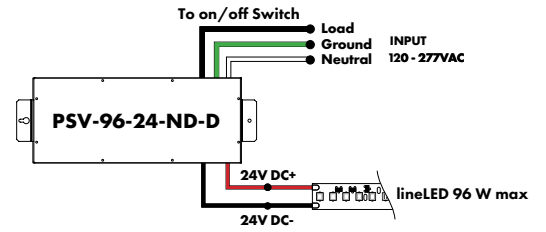
Power Supplies

See Power Supply instructions and spec sheet for wiring information. For a complete list of compatible dimmers, see Compatible Dimming Chart on the Resources page.

Non-Dimming Power Supply 120VAC - 277VAC

MODEL	POWER	OUTPUT	DIMMING	LOCATION
PSV - PSV Series	96 - 96 Watt	24 - 24 VDC	ND - Non Dimming	D - Damp

MODELS	96W
Length	14.40"
Width	5.20"
Depth	2.60"



Plug In Power Supply

MODEL	POWER	OUTPUT
PI - Plug In Series	130 - 130 Watt 160 - 160 Watt 196 - 196 Watt	24 - 24 VDC

MODELS	130	160	196
Length	3.73"	4.48"	6.00"
Width	1.83"	2.00"	2.35"
Depth	1.25"	1.22"	1.46"

