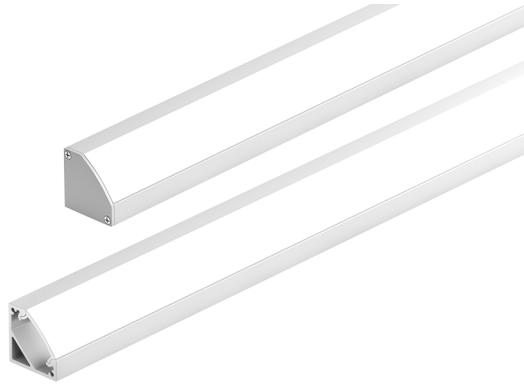


# B45C Basics Corner 45 Channel

Contractor Grade Extruded aluminum profile



## Features

Basics by Luminii Contractor-Grade corner 45° extrusions compatible with Basics by Luminii LED strips.

### Finish

Silver anodized

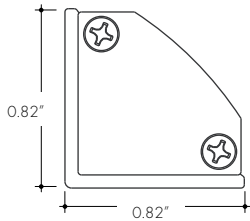
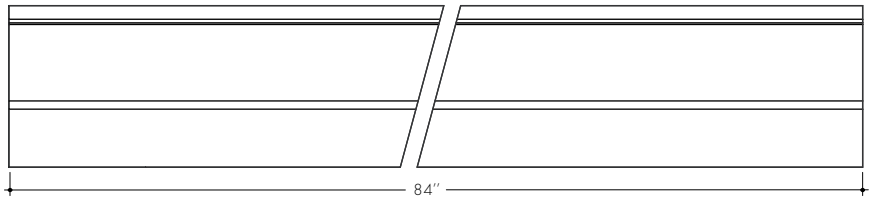
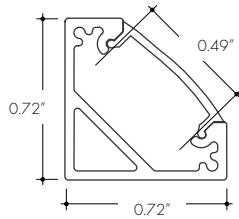
### Mounting

Fixed Clip Mounting Bracket

### Diffuser lens

Polycarbonate  
Snap-in-place  
UV resistant

## Product Dimensions



B45C with Fixed Clip 45°

### INCLUDED MOUNTING ACCESSORIES

EXTRUSION LENGTH	MOUNTING HARDWARE	END CAP (PAIR)
84"	4	1

Each pair of endcaps includes 1x H0 (no wire feed hole) and 1x H1 (with hole) where applicable. Additional endcaps and mounting clips are available for purchase.

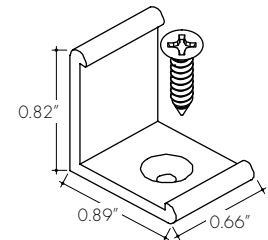
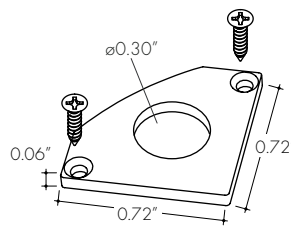
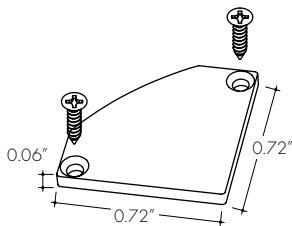
## Accessories

All Channels come with a specified set of Mounting Clips and End Caps, see Ordering Code for details. Order additional Mounting Clips and End Caps as necessary.

**EC-B45C-H0-SA**  
End Cap

**EC-B45C-H1-SA**  
End Cap with Powerfeed Opening

**MB-B45C-SA**  
Fixed Clip 45°  
**-FC45**



## Ordering code

MODEL	LENGTH	LENS	MOUNTING <sup>2</sup>	FINISH
B45C - Basics Corner 45° Channel <sup>1</sup>	84 - 84"	C - Clear F - Frosted HF - Half Frosted	FC45 - Fixed Clip 45°	SA - Silver Anodized

1 - End Caps are included with channel, one of H0 (no hole) and one of H1 (with hole). Order additional End Caps as necessary.

2 - Mounting Clips are included with channel. Refer to chart above for provided mounting clip quantities. Order additional Mounting Clips as necessary.