

# LETO 11 WM Wet

FOR LETO 11 WM WET & WM UD WET

 **senso**  
by luminii

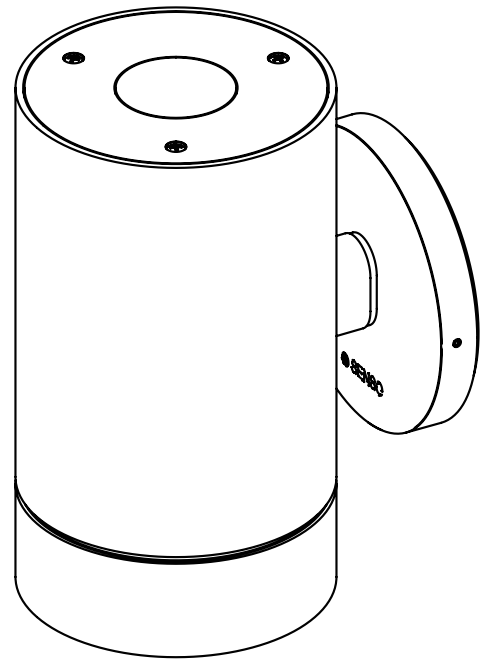
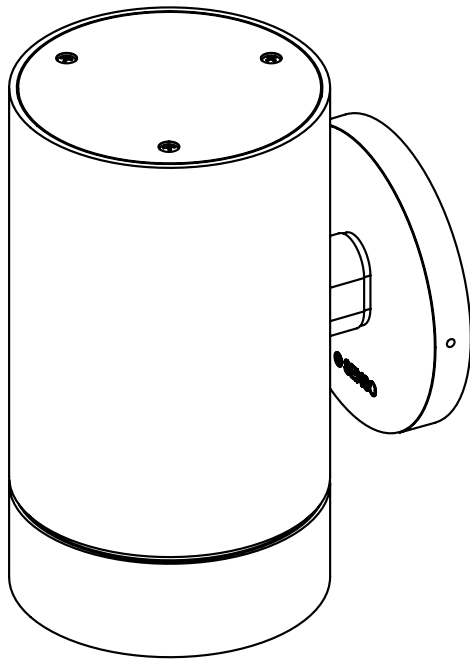
Overview / Vue d'ensemble



Install bracket so that fixture lines up with the desired orientation.

Leto 11 WM Wet may only be installed on smooth flat surfaces. Uneven surfaces such as brick will not ensure a water tight seal.

Use Dowsil 1199 silicone glazing sealant or equivalent.



## Read and follow these instructions before installing or maintaining this product

- This product is suitable for **DAMP OR WET LOCATIONS**
- Make sure this product is **NOT** on the same circuit as inductive loads, (e.g. fluorescent bulbs, discharge bulbs, ventilation fans, etc...)
- Allow air to flow freely around the fixture
- Do not switch on line voltage until all wiring is complete
- Incorrect wiring will result in irreparable damage to LED and power supply
- This product should only be installed by a licensed electrician

## Veuillez lire et suivre ces instructions avant l'installation ou l'entretien de ce produit

- Ce produit convient pour une installation **DANS UN ENDROIT HUMIDE ET MOUILLÉ**
- Assurer vous que des charges inductives ne se retrouvent pas sur le même circuit que ce produit, (i.e. fluorescent, ampoules à décharge, ventilateurs, etc...)
- Permettre à l'air de circuler librement autour du luminaire
- Compléter les branchements avant de mettre sous tension
- Un branchement incorrect créerait des dommages irréparables à l'alimentation et au DEL
- Ce produit devrait être uniquement installé par un électricien qualifié



## Warranty

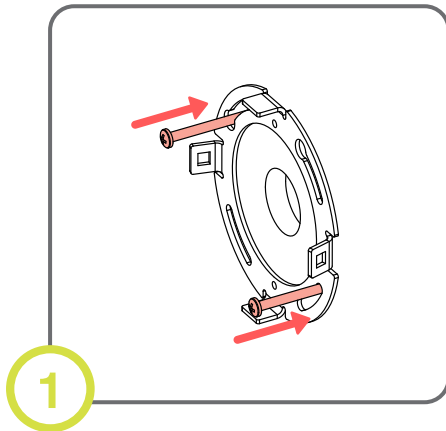
- This product must be installed in accordance with all applicable installation codes and ordinance
- Limited five (5) years warranty
- Warranty is void in the eventuality of unauthorized modifications and/or improper use

## Garantie

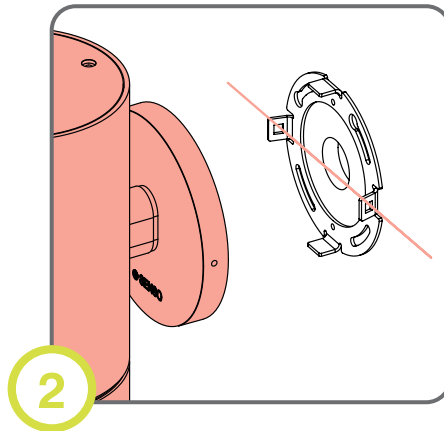
- Ce produit doit être installé conformément au code d'installation et autres normes applicables
- Garantie limitée de cinq (5) ans
- La garantie est non valide advenant une modification non autorisée ou un usage non approprié

# LETO 11 WM Wet

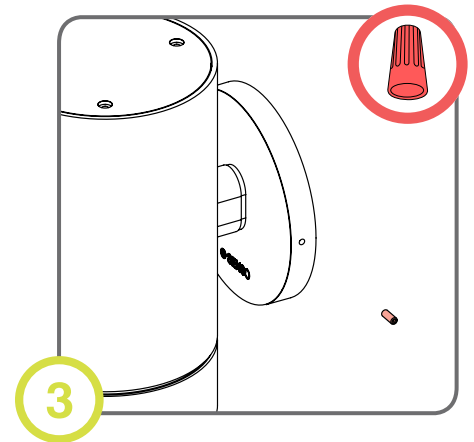
## Installation / Installation



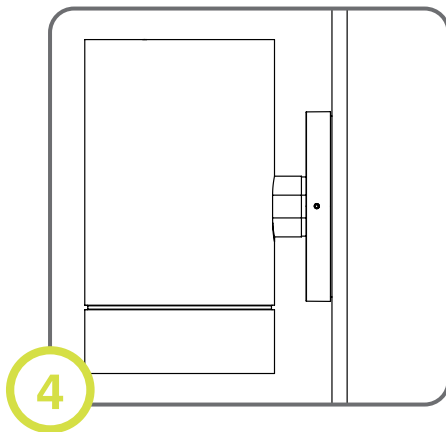
Mount bracket to wall or junction box. Make sure the tabs are level horizontally.



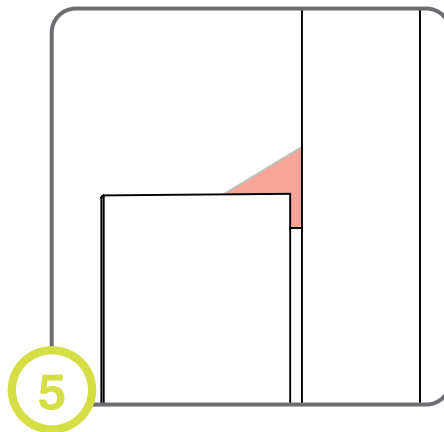
Make DC electrical connections. Align Leto 11 WM Wet to the tabs on the bracket.



Push Leto 11 WM Wet tightly against the wall. Secure in place using the 2 set screws.



Apply silicone around the edge between the wall and the canopy. Apply silicone to each set screw hole as well.



Be sure to fill the area shown above. Keep the bead smooth with no air gaps.

